

Salice F70 Undermount

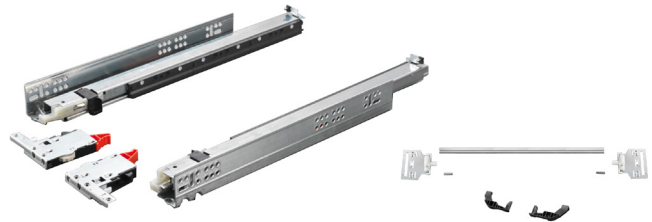


Product Features

- 77kg (170lbs) Static Load Capacity; 70kg (154lbs) Dynamic Load Capacity
- Full-extension with a synchronized mechanism
- Soft-close or push to open versions
- Enhanced smooth soft-closing action
- Available in full range of lengths 350mm - 750mm
- Tool free height adjustments +2.5mm, depth adjustments +/-3mm, side adjustments +/-1.5mm and optional tilt adjustment +3mm
- Elongated holes for added depth and height adjustment
- Optional synchronizer kit for push-open, optimizes the opening movement of wider drawers

What's In the Box

- Set of left and right side slides
- Sold Separately - Front fixing brackets
- Optional:
 - Tilt adjustment levers
 - Push synchronizer kit



F70 Soft-Close Undermount Ordering Guide

Part#	Length	Qty/Box
SG7E6S350XXB	350mm	6
SG7E6S400XXB	400mm	6
SG7E6S450XXB	450mm	6
SG7E6S500XXB	500mm	6
SG7E6S550XXB	550mm	6
SG7E6S600XXB	600mm	4
SG7E6S650XXB	650mm	4
SG7E6S700XXB	700mm	4
SG7E6S750XXB	750mm	4

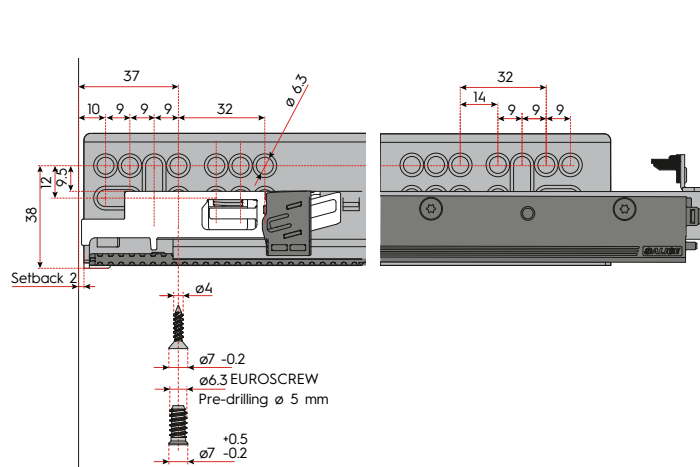
F70 Push-Open Undermount Ordering Guide

Part#	Length	Qty/Box
SG7E6P350XXB	350mm	6
SG7E6P400XXB	400mm	6
SG7E6P450XXB	450mm	6
SG7E6P500XXB	500mm	6
SG7E6P550XXB	550mm	6
SG7E6P600XXB	600mm	4
SG7E6P650XXB	650mm	4
SG7E6P700XXB	700mm	4
SG7E6P750XXB	750mm	4

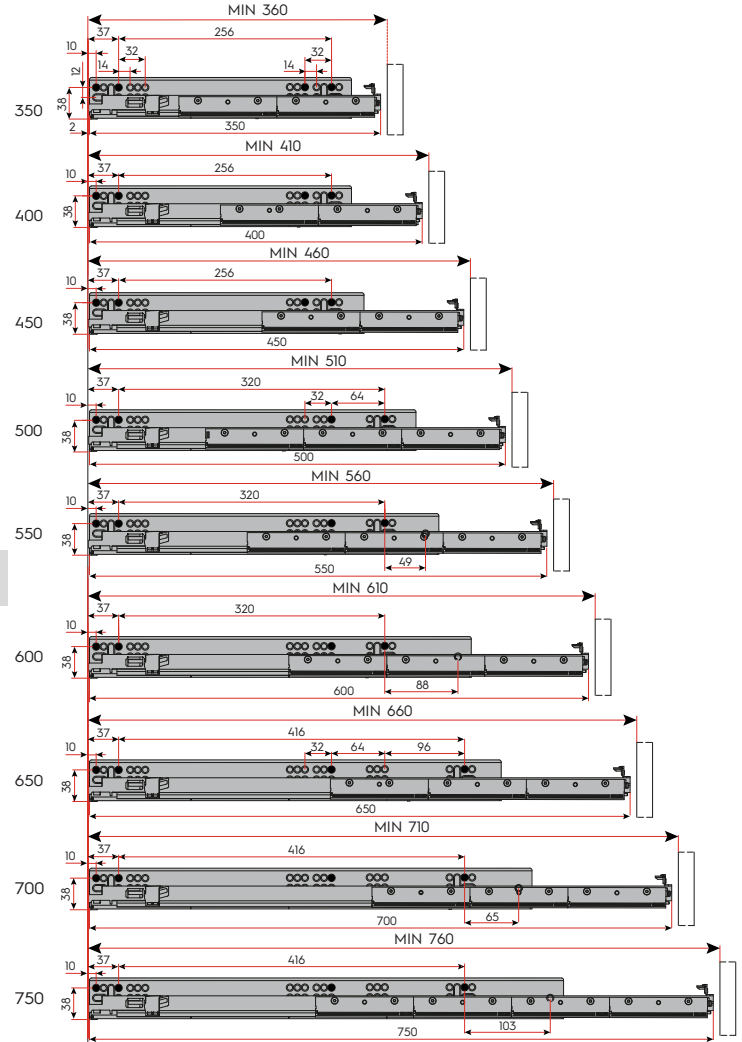
Accessory Items

Part#	Description	Quantity/Box
SAFCEX43B	Salice F70 Narrow Clip L/R	pair
SAFCGX3B	Salice F70 Clip Standard Mount L/R	pair
SAGLRXX3F	Salice F70 Tilt Adjustment Lever L/R	pair
SAPKF7X51150	Salice F70 Push Synchronizer Kit	1
SSGD704UGXA	Salice F70 Drilling Template	1

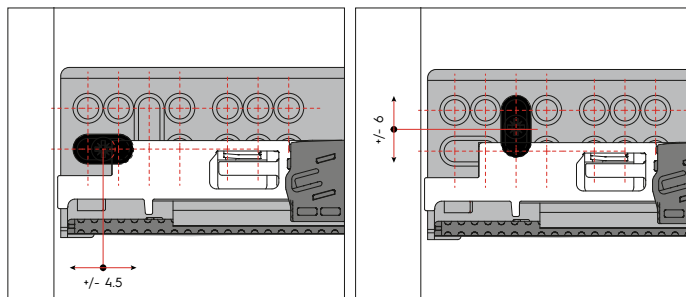
Mounting Full-extension Slide on the Cabinet Side



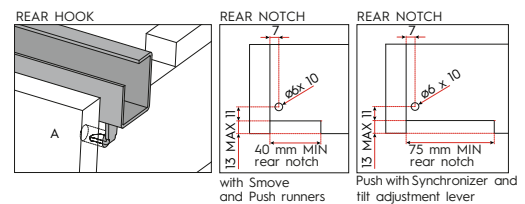
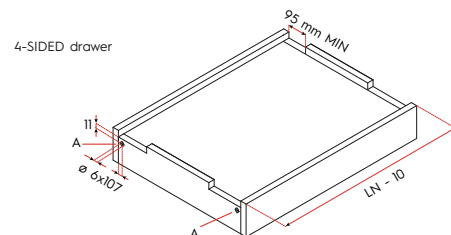
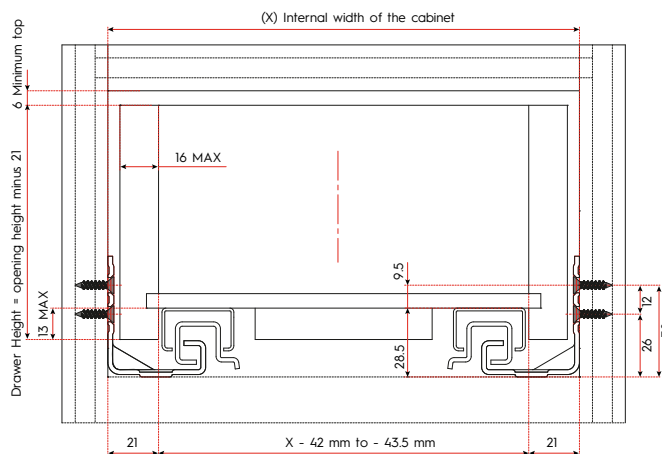
Drilling Pattern



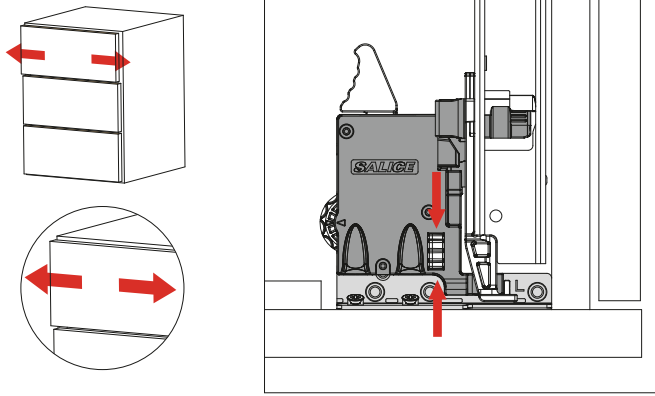
Elongated Hole (additional height and depth adjustments)



Installation Dimensions

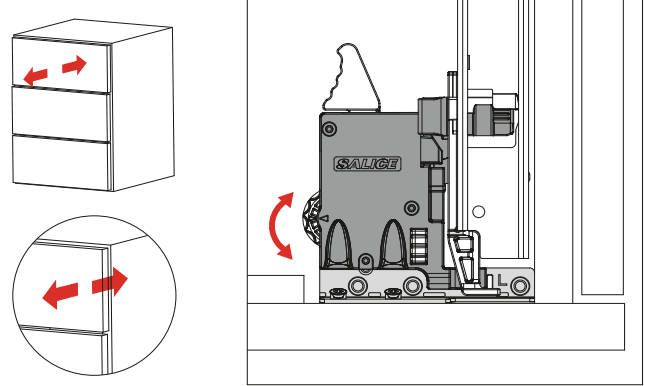


Side Adjustment +/- 1.5 mm



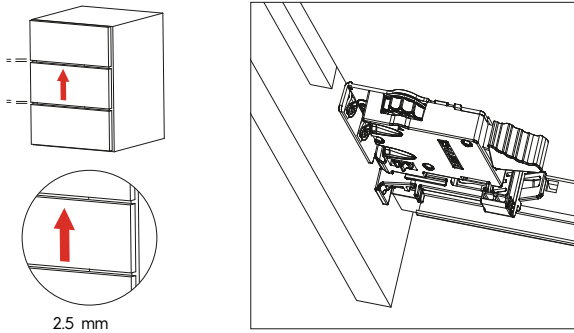
Rotate the white wheel towards the drawer front to adjust left.
Rotate the white wheel towards the back of the drawer to adjust right.

Depth Adjustment +/- 3 mm

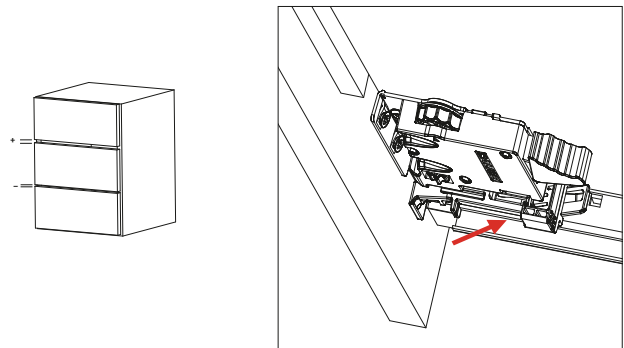


Rotate the white wheel towards the outside of the drawer to increase the gap between the front and the side.
Rotate the white wheel towards the inside of the drawer to reduce the gap between the front and the side.

Height Adjustment + 2.5 mm

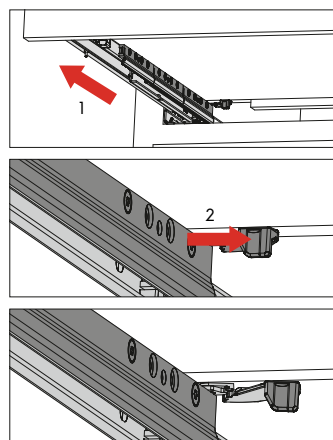
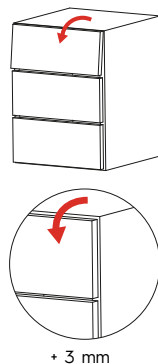


Push the lever towards the inside of the drawer to achieve height adjustment
This operation is tool free.



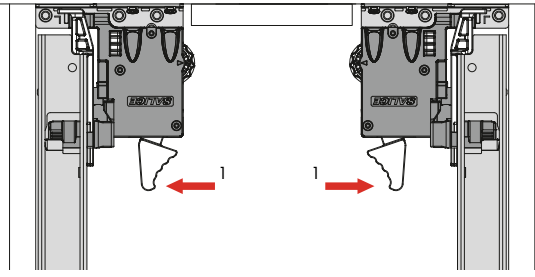
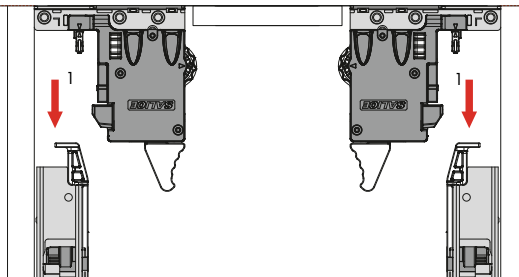
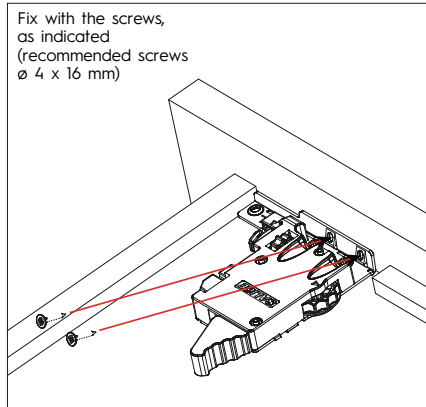
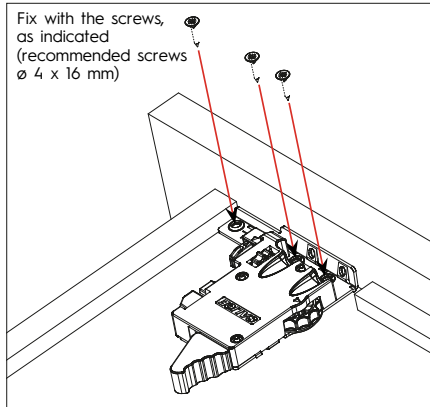
Tilt Adjustment + 3 mm

Open the drawer and press the lever to achieve the adjustment. This operation is tool free.





Drawer Assembly & Removal

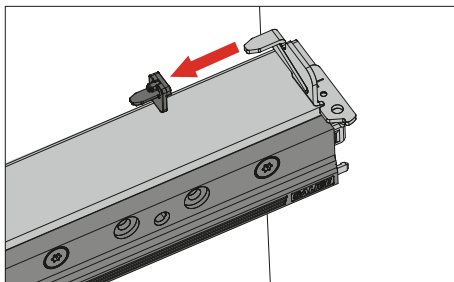


Drawer Assembly

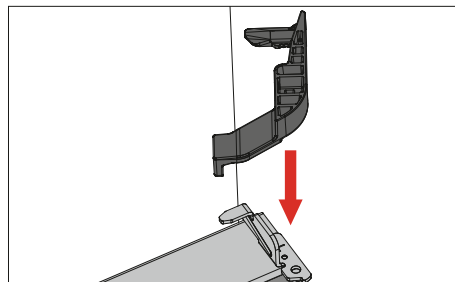
Drawer Removal

Assembly of Tilt Adjustment Lever (Optional)

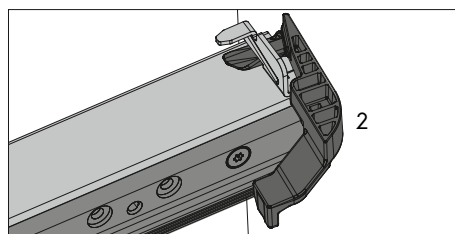
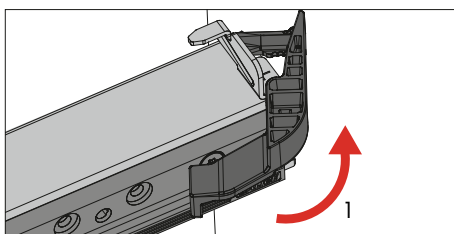
Pull out the drawer and remove the plastic insert



Insert the tilt adjustment levers, both right and left

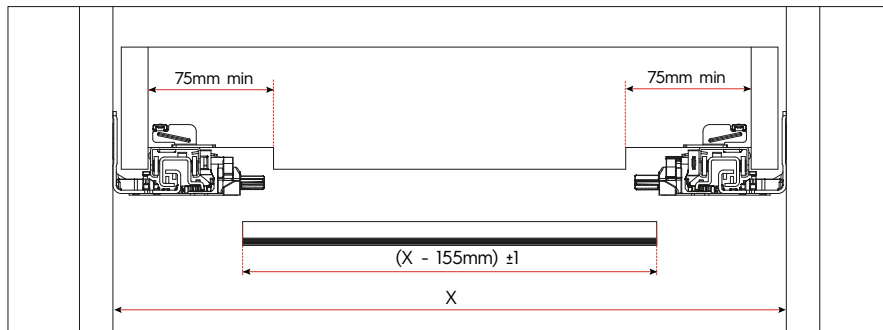
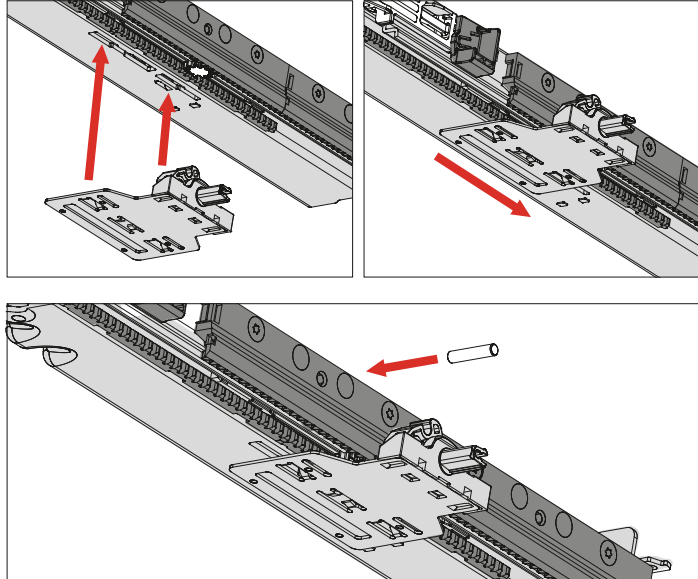


Rotate the lever to achieve the required adjustment

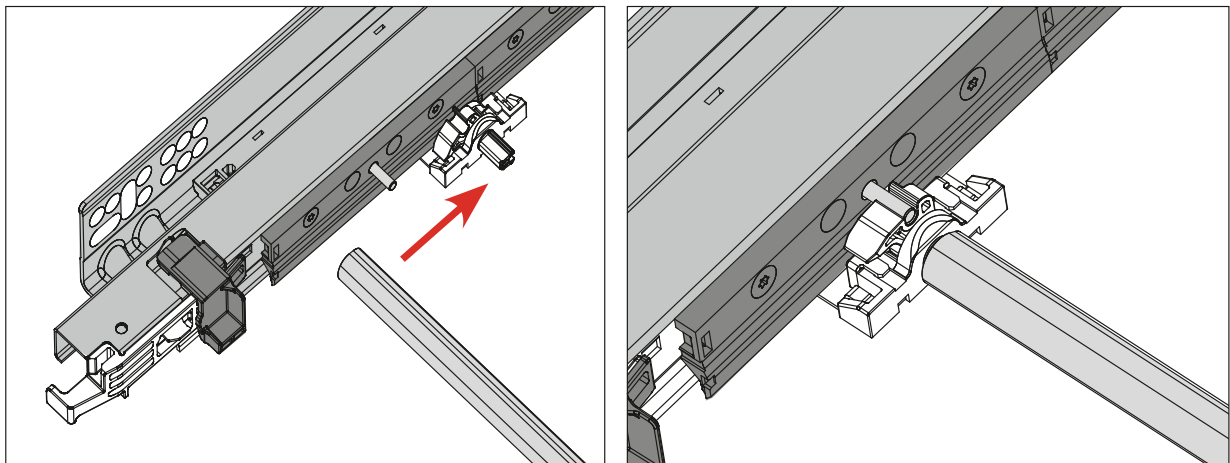




Assembly of Push Synchronizer Kit (Optional)



X = Internal width of the cabinet



Applying pressure on any part of the drawer front is sufficient for the drawer to open