

M-Series Swing Corner



Product Features

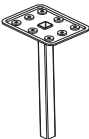
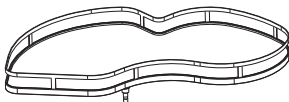
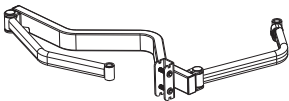

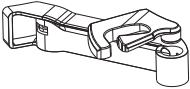

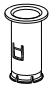

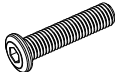
The M-Series Swing Corner pullout is made of high-grade MDF shelves with a Sunlight Silver finish to ensure a durable and cost effective solution to blind corner storage. It features a soft-close mechanism, 30kg (66lbs) maximum load capacity, pre-cut removable anti-slip mats, and three height settings for total customization, and a telescopic mounting arm for easy installation.

- Optimized for an 450mm (18") door opening
- Designed for a 900mm (36") cabinet interior
- 3 height settings for customizable storage
- Soft-close for silent closing action
- Removable pre-cut anti-slip mats
- Telescopic mounting arm for easy installation
- Load Capacity: 15kg (33lbs) per shelf, Total load capacity: 30kg (66lbs)
- Sunlight Silver finish

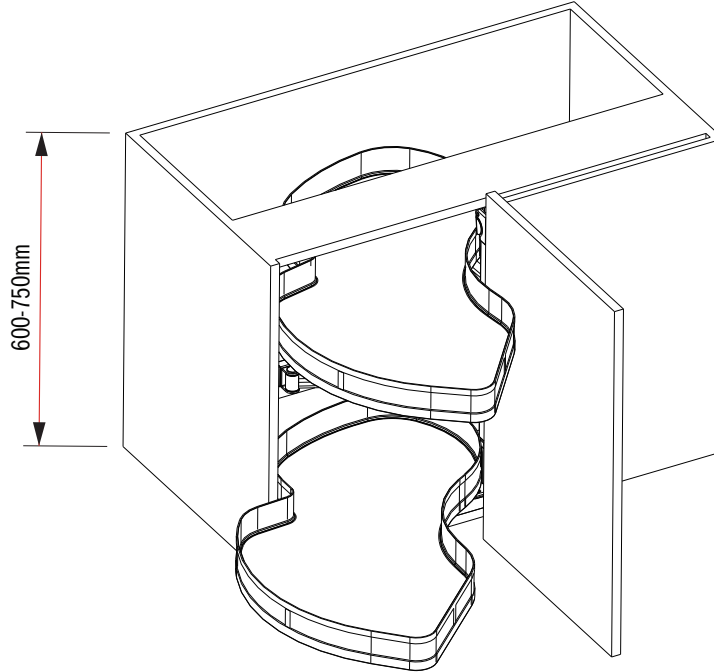
Ordering Guide

Part#	Description	Dimensions	Quantity/Box
041-101071-SLS	Left Opening	775mm x 465mm (560mm-660mm)	1
041-101072-SLS	Right Opening	775mm x 465mm (560mm-660mm)	1

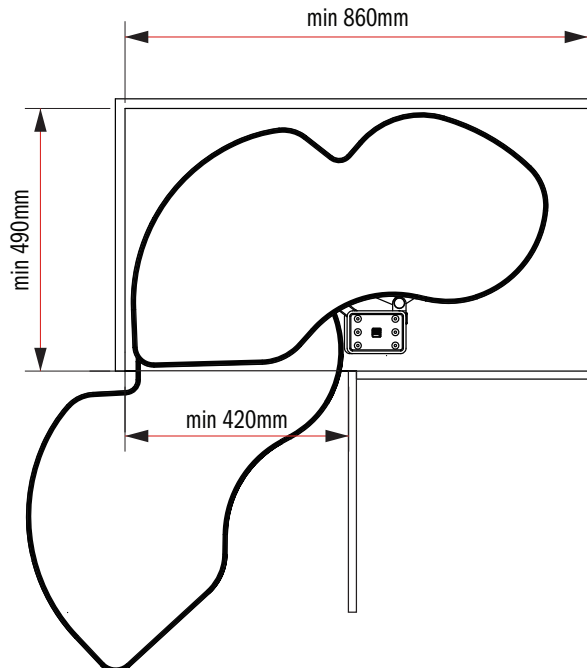
What's In the Box

- | | | | |
|---|---|--|--|
| <p>1. x1</p>  | <p>2. x2</p>  | <p>3. x2</p>  | <p>4. x1</p>  |
| <p>5. x2</p>  | <p>6. x2</p>  | <p>7. x4</p>  | <p>8. x16</p>  |
| <p>9. x4</p>  | | | |

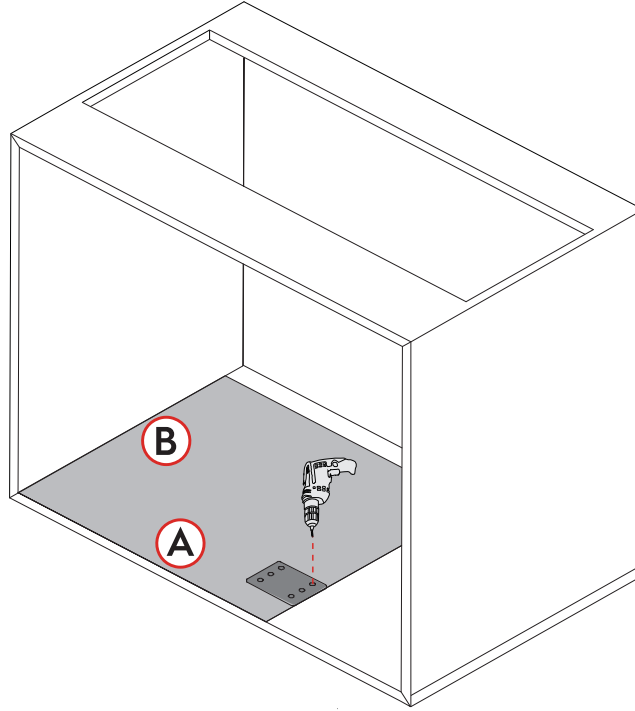
Left Side Installation



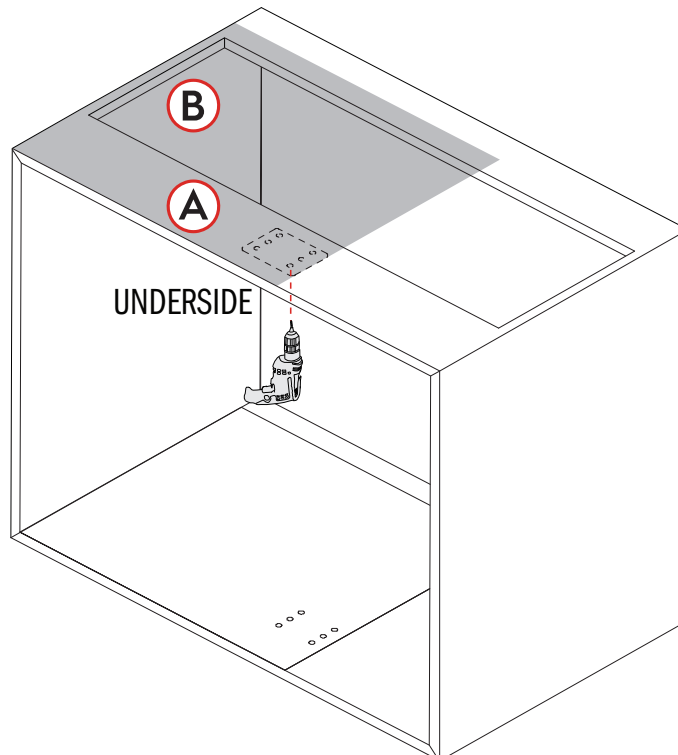
Installation Dimensions



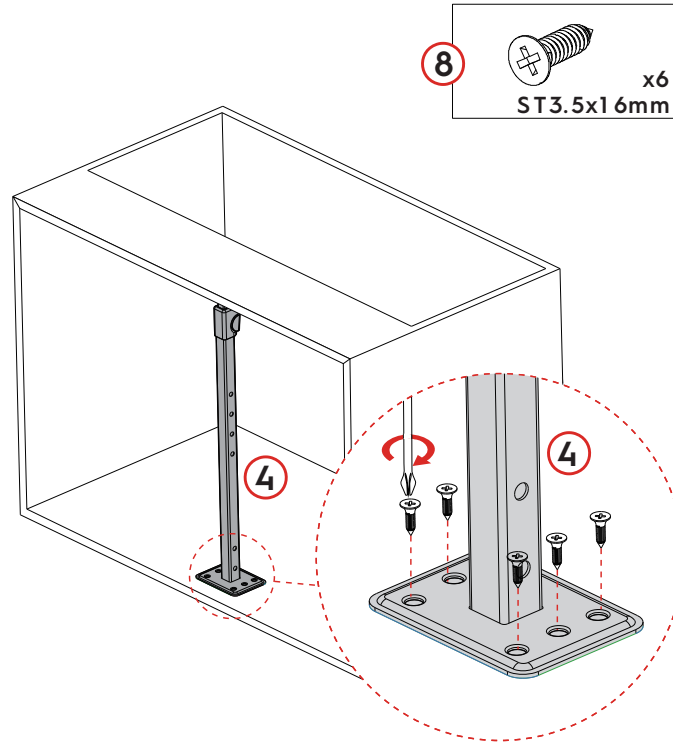
Step #1



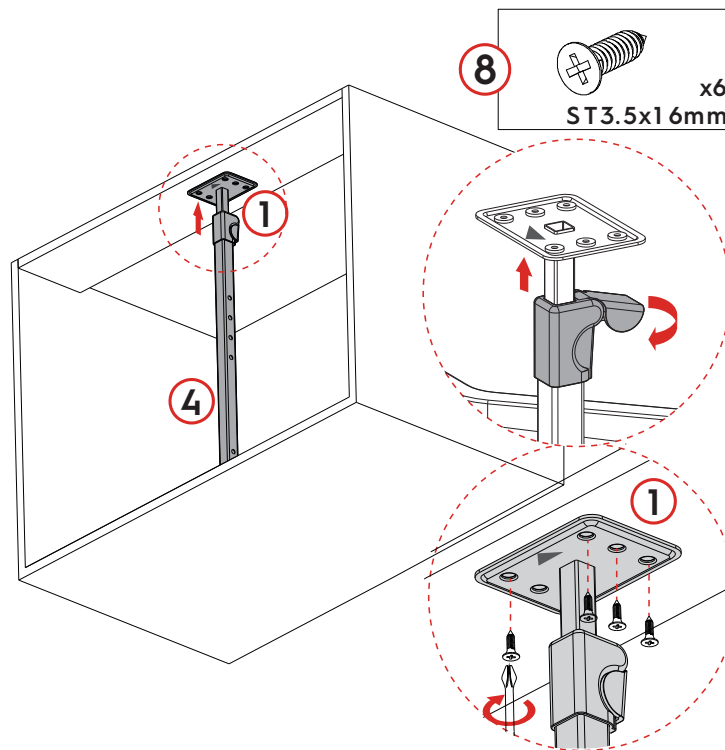
Step #2



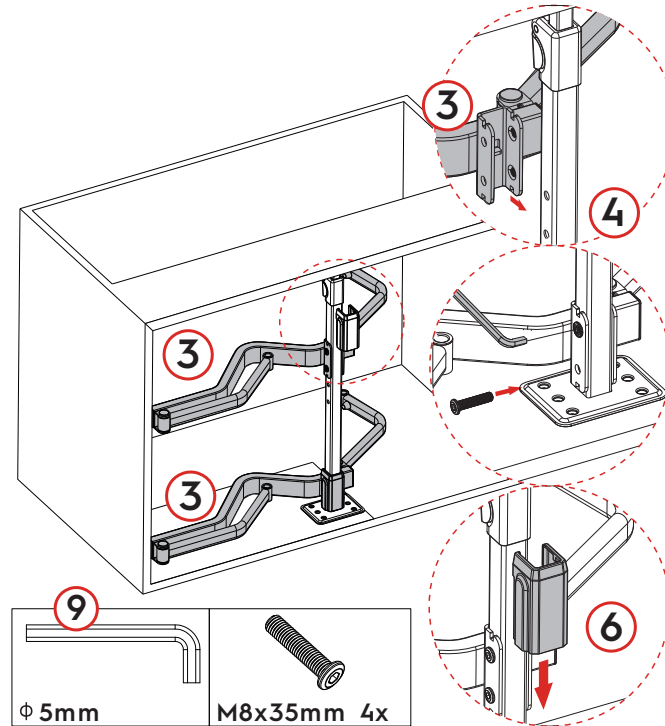
Step #3



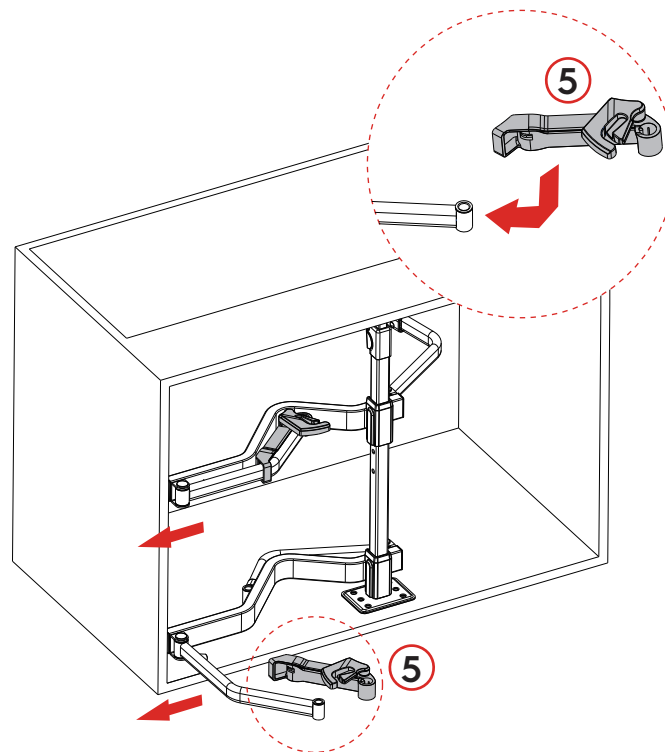
Step #4



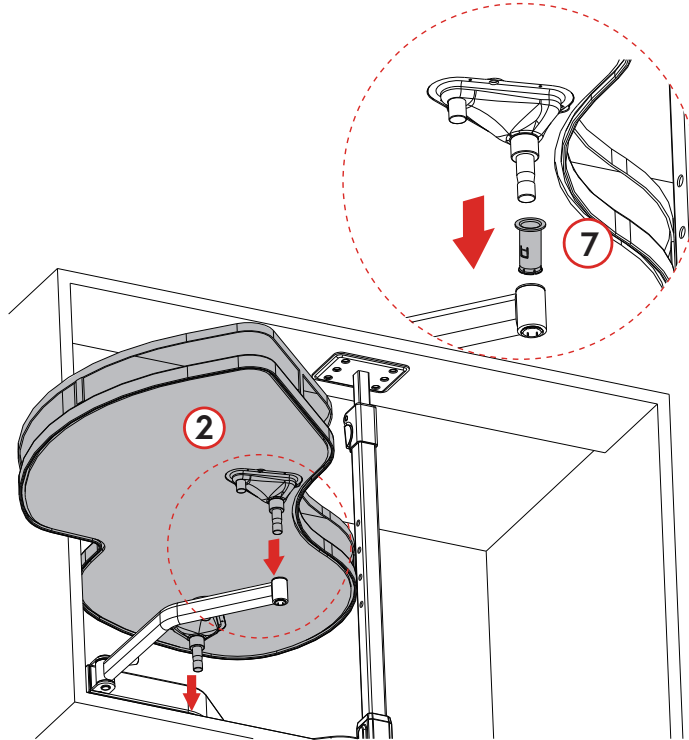
Step #5



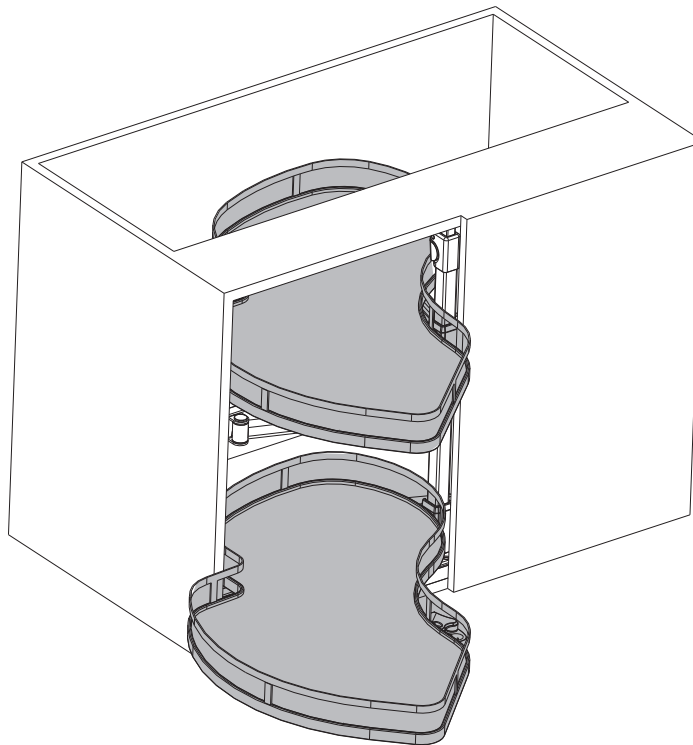
Step #6



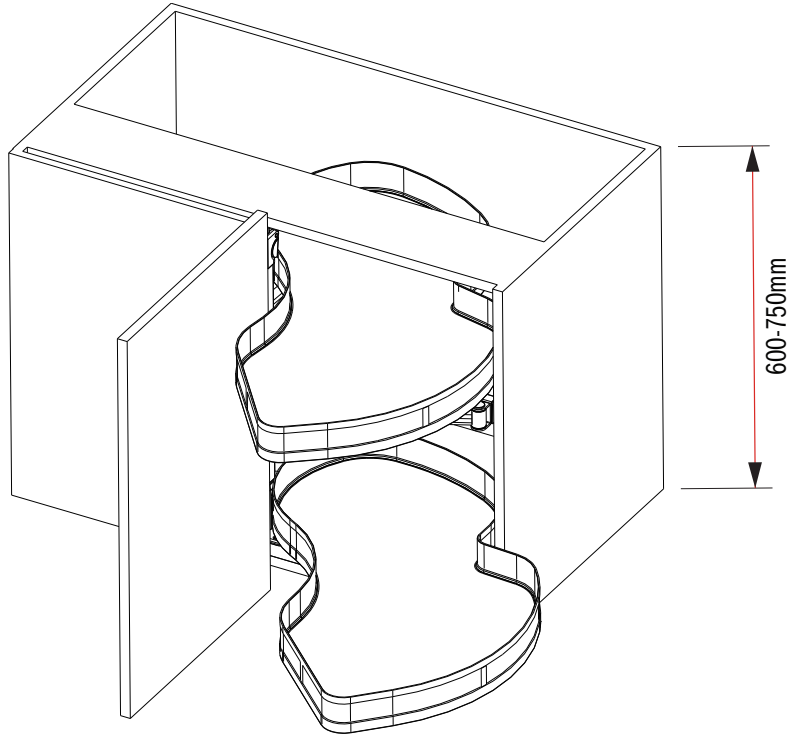
Step #7



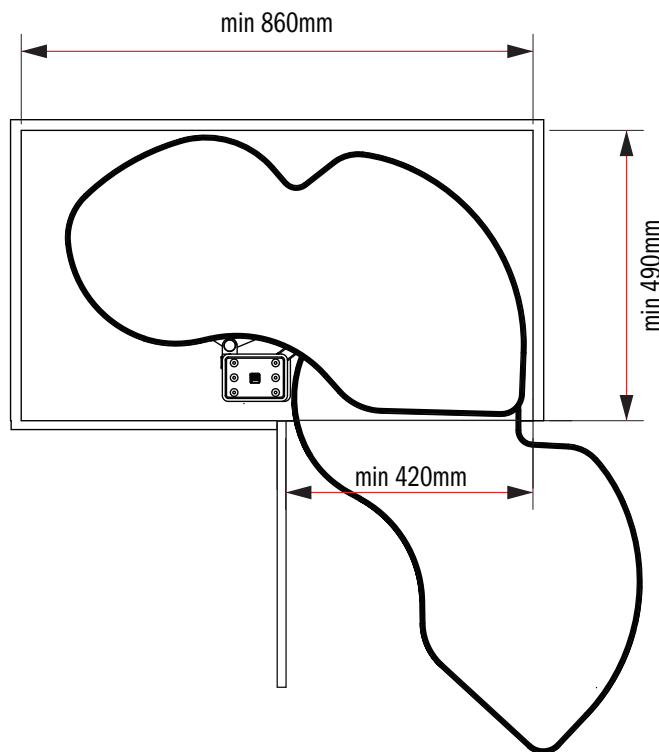
Step #8



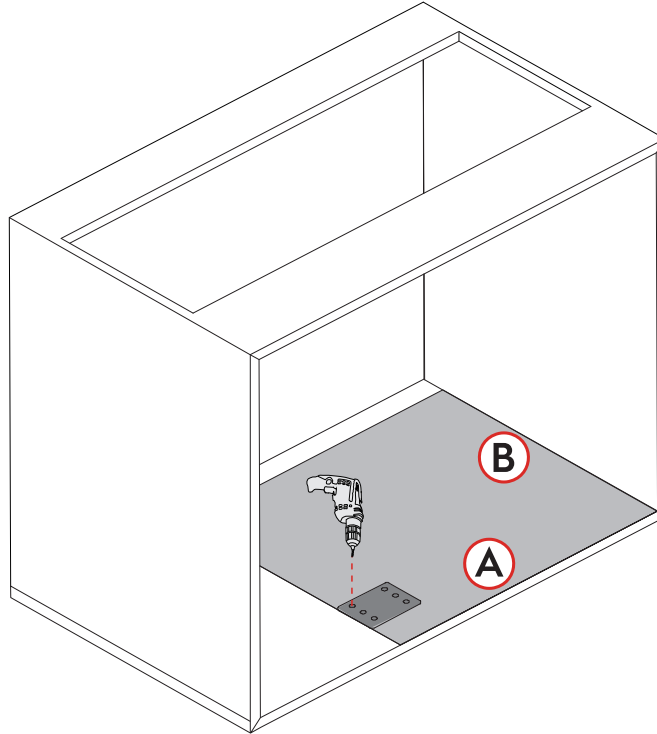
Right Side Installation



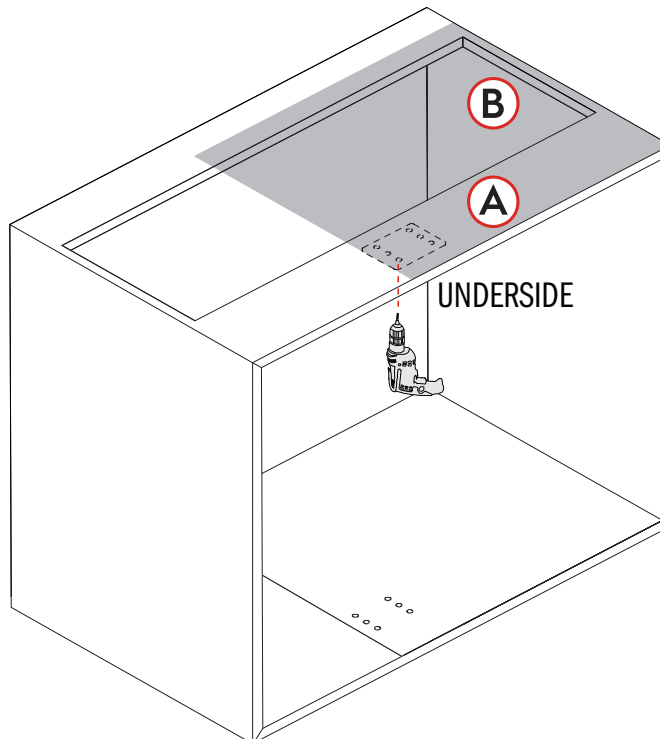
Installation Dimensions



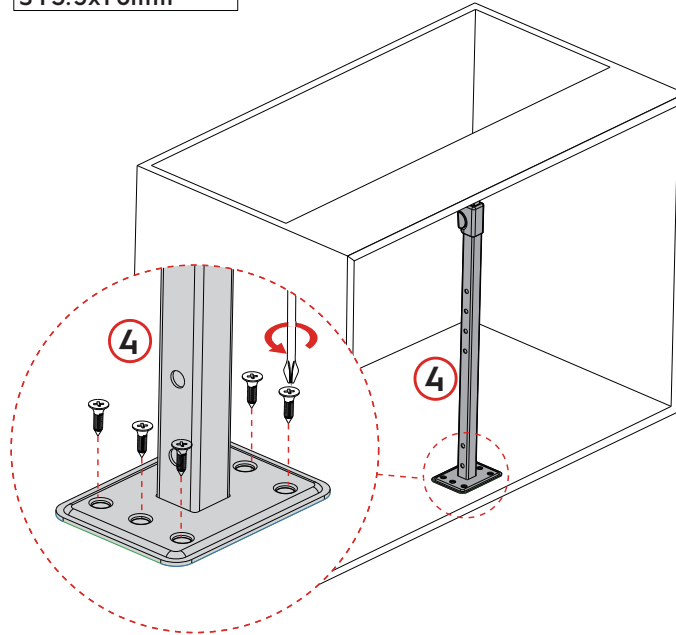
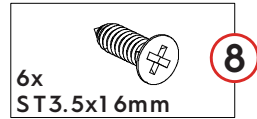
Step #1



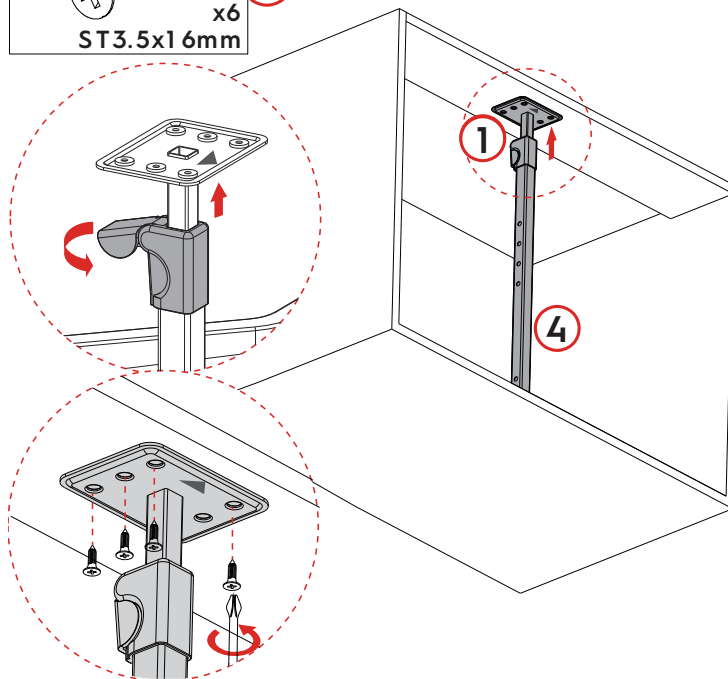
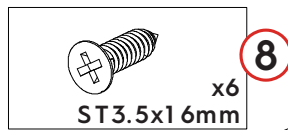
Step #2



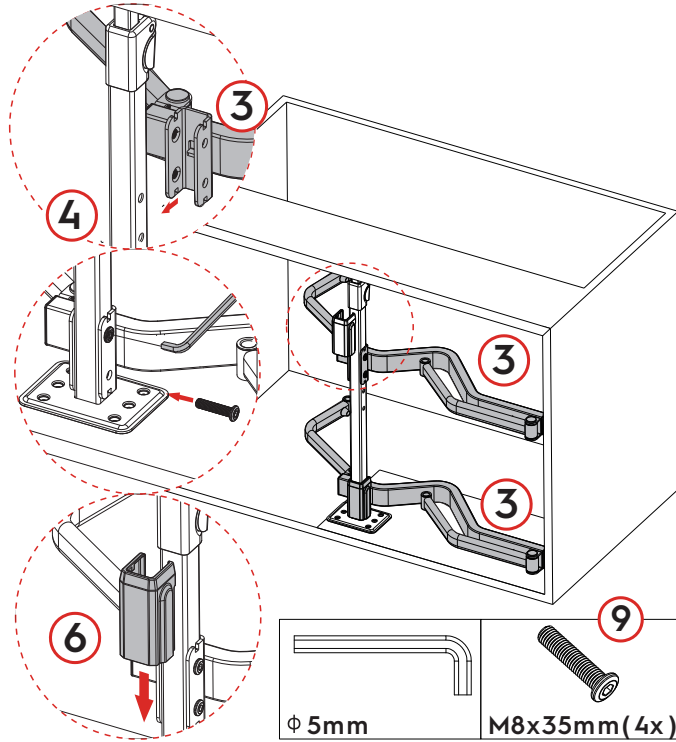
Step #3



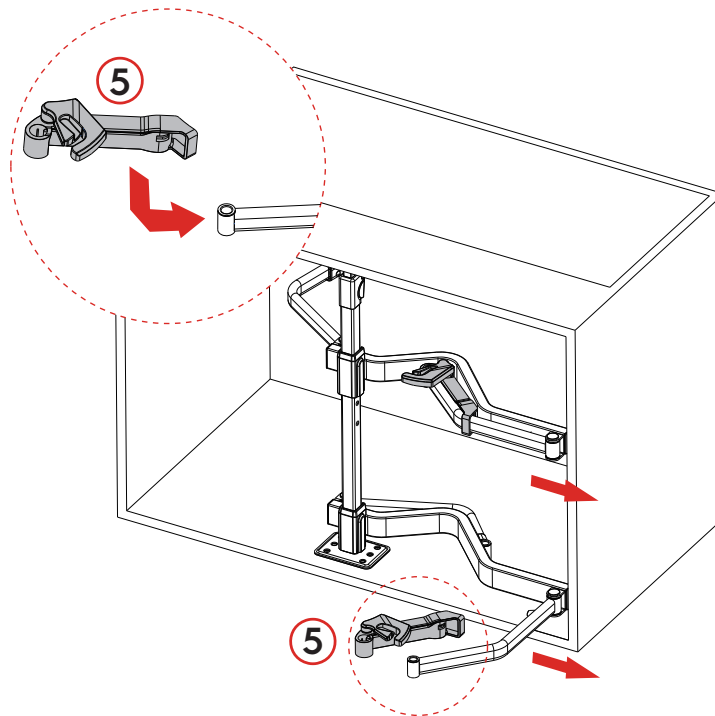
Step #4



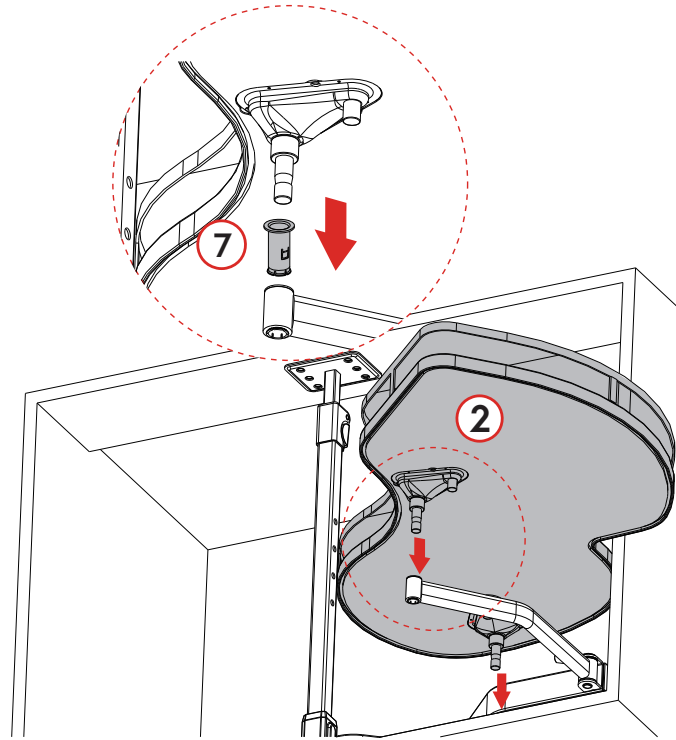
Step #5



Step #6



Step #7



Step #8

