



## Hinge 106° 1-1/8" OL, Screw-On, 2 Cam

**Part Number: SCSP3199N**

Salice Hinge 106° 1-1/8" OL, Screw-On, 2 Cam

<div><br></div>

Adjustment Type	2-Way Cam Adjust
Angle	106
Application Type	Face Frame
Closing Type	Self-Close
Door Type	Face Frame
Finish	Nickel
Hinge Cup Depth	11
Hinge Door Thickness	Up to 3/4" Thick
Mounting Type	Screw-On
Overlay	1-1/8 in

## Product Description

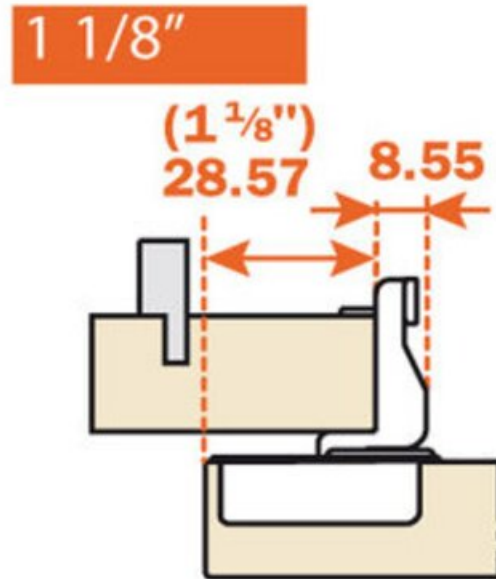
Salice Excentra Face Frame hinges enable easy and simple installation while combined with their superior technical features ensuring that you receive a reliable and consistent door action. These low-profile, one-piece face frame hinges provide eccentric cams for two way adjustments, including side-to-side and in-and-out, providing you with perfect alignment. Available in both screw-on and doweled versions, they will enable long-lasting attachment to the frame with superior stability and zero door protrusion. Expect a lifetime of smooth opening and closing in your kitchen when you pick Salice.

## Product Advantages

- Salice provides a lifetime warranty
- Precise door alignment
- Zero door protrusion
- Boring pattern same as the industry standard

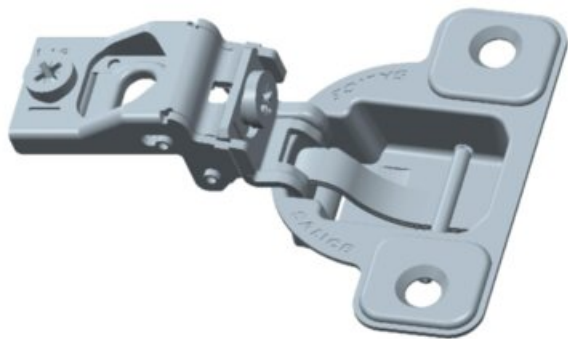


## Technical Documents



View this product online at <https://marathonhardware.com/pd/SCSP3199N>

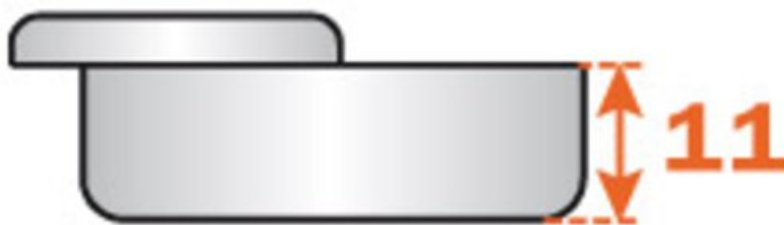
---

**Technical Documents**

View this product online at <https://marathonhardware.com/pd/SCSP3199N>



## Technical Documents



View this product online at <https://marathonhardware.com/pd/SCSP3199N>

## Technical Documents

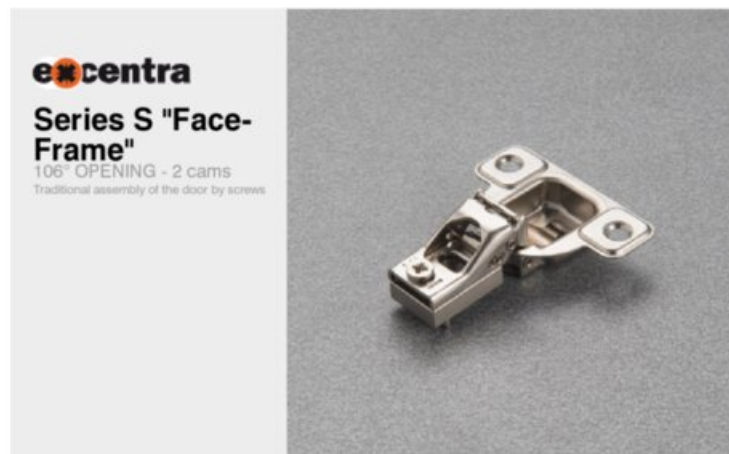


# SALICE



## hinges

automatic closing / face frame hinge / standard applications



Stamped steel.  
Cup depth 11 mm (7/16").  
Opening 106° degrees.  
Drilling distance (K) fixed at 2.5 mm (3/32").  
Gap between door and frame (L) = 4.6 mm.



For overlays from 1/4" through 3/4" the "A" value (Reveal) = 8.3 mm for (21/64") square edge doors at 90° opening.

For overlays from 1" through 1-7/16" the "A" value (Reveal) = 5.2 mm for (3/4") square edge doors at 90° opening.

**ARTURO SALICE S.p.A.** (società con unico socio)  
Via Provinciale Novaresa, 10  
22060 NOVARATE (COMO) ITALIA  
TEL. 031 760424  
FAX 031 771608  
info.salice@salice.com  
www.salice.com  
CAPITAL SOC. € 28.000.000 I.V.  
S.P.A. P. IVA 00211850130  
REG. IMPRES. COMO 00211850130  
SCA COMO 1796169

**DEUTSCHE SALICE GmbH**  
TALBO WERKZEUGE GmbH  
www.salice.de  
**SALICE UK Ltd.**  
HUNTINGDON CAMBS PE28 6PN  
www.saliceuk.co.uk

**SALICE FRANCE S.A.R.L.**  
DESIGN ARTISAN  
www.salicefrance.com  
**SALICE CANADA Inc.**  
MONTREAL-QUEBEC L3L 8Y1  
www.salicecanada.com

**SALICE AMERICA Inc.**  
CHARLOTTE NC 28227  
www.saliceamerica.com  
**SALICE ESPAÑA, S.L.R.**  
GRAN VINOLEJO  
www.saliceespana.es

View this product online at <https://marathonhardware.com/pd/SCSP3199N>

