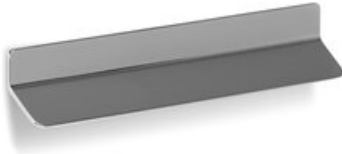


## Thin Pull 160mm Polished Chrome

**Part Number: V0230160Z01**



Thin Pull, 160mm, Polished Chrome

This sleek and finger pull adds an elegant and modern touch to any furniture piece.

Center to Center Length	160 mm
Collection	Thin
Colour Group	Silver
Finish Code	Polished Chrome
Material	Zinc Diecast
Mounting Type	M4 Machine Screw
Overall Length	192 mm
Projection (Height)	20 mm
Style Family	Designer
Type	Finger Pull
Width	33 mm

### Product Description

The Thin handle from Viefe meets all the requirements to be a success in the world of interior design. It's slim, minimalist and very comfortable. We're talking about a Zinc Zamak plate with a light horizontal pleat, nothing more, nothing less. The simplicity of its design is precisely what lends it character. It is "semi" built-in as it has two inserts that fit directly into the furniture so making it completely supported to the wood.

It can be fitted both horizontally and vertically. Fitting it to the upper part of the door, as can be seen on the image, is a really interesting option, giving the piece of furniture a more striking and modern look. It comes in three different finishes: shiny chrome, brushed nickel and a chrome look. They are all comfortable and attractive whether fitted in kitchens and bathrooms, to household furniture or in kids bedrooms.

Thin belongs to the [Zamak line](#). Model [0230](#)

### Important Information

Drill Hole Dimensions:

Diameter 8mm

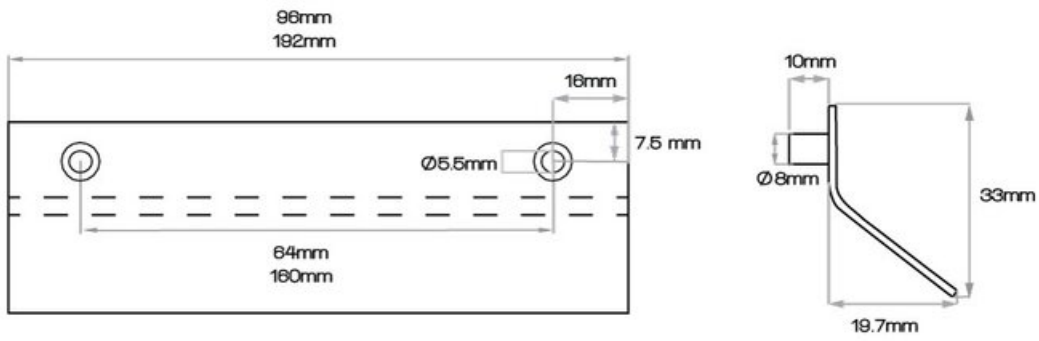
Depth min. 10mm.

### Included Products

Industry standard mounting hardware



## Technical Documents



View this product online at <https://marathonhardware.com/pd/V0230160Z01>

