

Wave Pull 160mm Brushed Nickel

Part Number: V0119160Z23



Wave Recessed Pull, 160mm, Brushed Nickel

This modern furniture pull recesses into your drawer front to create the ultimate no profile handle.

| | |
|-------------------------|------------------|
| Center to Center Length | 160 mm |
| Collection | Wave |
| Colour Group | Silver |
| Finish Code | Brushed Nickel |
| Material | Zinc Diecast |
| Mounting Type | M4 Machine Screw |
| Overall Length | 173 mm |
| Projection (Height) | 13.5 mm |
| Style Family | Designer |
| Type | Recessed |
| Width | 40 mm |

Product Description

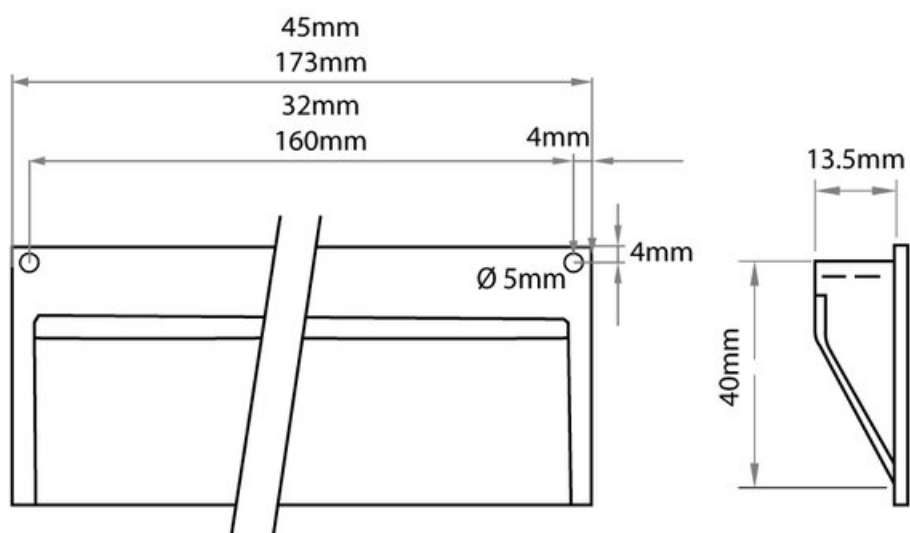
Wave handles, whether in a rectangular or square shape, have a timeless design inspired by handles on classic pieces of office furniture. They are really comfortable, easily installed, don't stand out too much and are perfect for kitchens and cupboards found in areas of limited space. They come in either shiny chrome or brushed nickel. The first combines especially well with ochre tones and the second lends a touch of contrast to all types of material. It comes in two measurements, 45 and 137 mm in width, which gives us room to experiment with its position whether vertical or horizontal and according to the size of the furniture.

Wave belongs to the [Zamak](#) line. Model [0119](#)

Included Products

Industry standard mounting hardware

Technical Documents



View this product online at <https://marathonhardware.com/pd/V0119160Z23>

