



Flexa Pull Leather 128mm Beige/Brass

Part Number: V0404128P2627

Flexa Leather Pull, 128mm, Beige / Brass

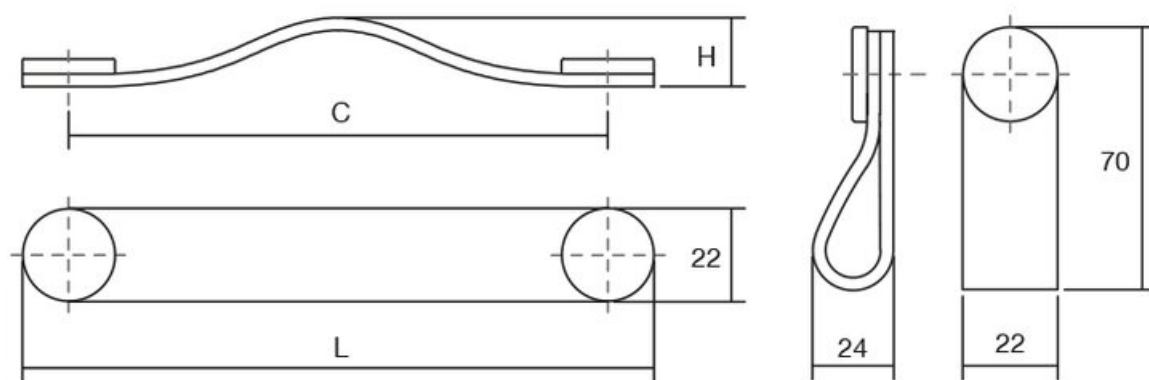
The leather Flexa handle adds a warm, organic touch to any piece of furniture.

Center to Center Length	128 mm
Colour Group	Brown
Finish Code	Beige, Brushed Brass
Mounting Type	M4 Machine Screw
Overall Length	150 mm

Product Description

The Flexa handle, made in leather, gives a warm, organic touch to whatever piece of furniture it may be fitted to. There are various measures to choose from which, combined with its leather finish and metallic buttons, means it can be fitted to decorative furniture in general, especially in bedrooms, dressing areas and as part of auxiliary furniture. It is made of the highest quality Spanish leather with the buttons manufactured in zamak.

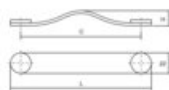
Technical Documents



View this product online at <https://marathonhardware.com/pd/V0404128P2627>

LEATHER + ZAMAK

NEW!
FLEXA 0404
Compact, Reliable, Networked Storage



	26 1987	30 1988	09 1989					
	Age	Sex	Rank		C	L	W	H
00 Polished stone / Orange black	0040102P0010	0040102P0011	0040102P0012	120	100	22	21	2, 25
00 Polished stone / Orange black	0040102P0013	0040102P0014	0040102P0015	100	190	22	21	2, 25
600 Brown / Yellow	0040102P0016	0040102P0017	0040102P0018	120	110	22	21	2, 25
600 Brown / Yellow	0040102P0019	0040102P0020	0040102P0021	100	180	22	21	2, 25
600 Black / Brown	0040102P0022	0040102P0023	0040102P0024	120	110	22	21	2, 25
600 Black / Brown	0040102P0025	0040102P0026	0040102P0027	100	180	22	21	2, 25
20 Brown / Green	0040102P0028	0040102P0029	0040102P0030	120	110	22	21	2, 25
20 Brown / Green	0040102P0031	0040102P0032	0040102P0033	100	180	22	21	2, 25



Page 3 / 4

