



Flexa Pull Leather 160mm Beige/Brass

Part Number: V0404160P2627

Flexa Leather Pull, 160mm, Beige / Brass

The leather Flexa handle adds a warm, organic touch to any piece of furniture.

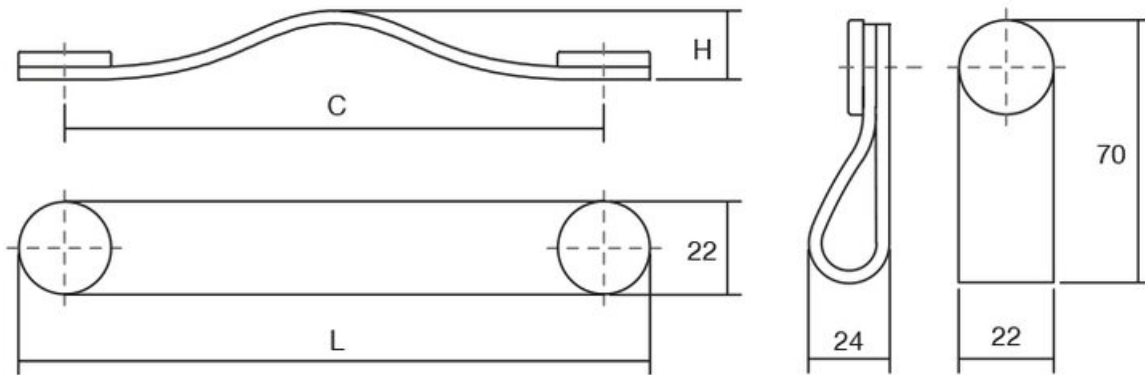
Center to Center Length	160 mm
Colour Group	Brown
Finish Code	Beige, Brushed Brass
Mounting Type	M4 Machine Screw
Overall Length	182 mm

Product Description

The Flexa handle, made in leather, gives a warm, organic touch to whatever piece of furniture it may be fitted to. There are various measures to choose from which, combined with its leather finish and metallic buttons, means it can be fitted to decorative furniture in general, especially in bedrooms, dressing areas and as part of auxiliary furniture. It is made of the highest quality Spanish leather with the buttons manufactured in zamak.



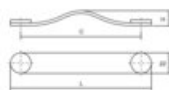
Technical Documents



View this product online at <https://marathonhardware.com/pd/V0404160P2627>

LEATHER + ZAMAK

NEW
FLEXA 0404
Coulter, Becton, Dickinson, Company



	3d (H2O)	3d (H2O)	3d (H2O)						
	Bridge	Bridge	Bridge	Back					
	Bridge	Stomach	Bridge	Bridge	C	L	W	H	I
01 Polished chrome / Green-bottle	041010P0010	041010P0010	041010P0010	041010P0010	120	100	22	21	2.25
01 Polished chrome / Green-bottle	041010P0010	041010P0010	041010P0010	041010P0010	100	150	22	21	2.25
001 Resin / Red	041010P0110	041010P0110	041010P0110	041010P0110	120	110	22	21	2.25
001 Resin / Red	041010P0110	041010P0110	041010P0110	041010P0110	100	100	22	21	2.25
001 Black / Resin	041010P0010	041010P0010	041010P0010	041010P0010	120	110	22	21	2.25
001 Black / Resin	041010P0010	041010P0010	041010P0010	041010P0010	100	100	22	21	2.25
27 Brown / Green	041010P0010	041010P0010	041010P0010	041010P0010	120	110	22	21	2.25
27 Brown / Green	041010P0010	041010P0010	041010P0010	041010P0010	100	100	22	21	2.25



Page 3 / 4

