



## Flexa Leather Finger Loop Knob 22x70mm Beige/Black

**Part Number: V0404070P26M2**

Flexa Leather Finger Loop Knob, 22x70mm, Beige / Black

The leather Flexa finger loop knob adds a warm, organic touch to any piece of furniture.

Colour Group	Brown
Finish Code	Beige, Matte Black
Mounting Type	M4 Machine Screw
Overall Length	70 mm
Projection (Height)	24 mm
Type	Knob
Width	22 mm

### Product Description

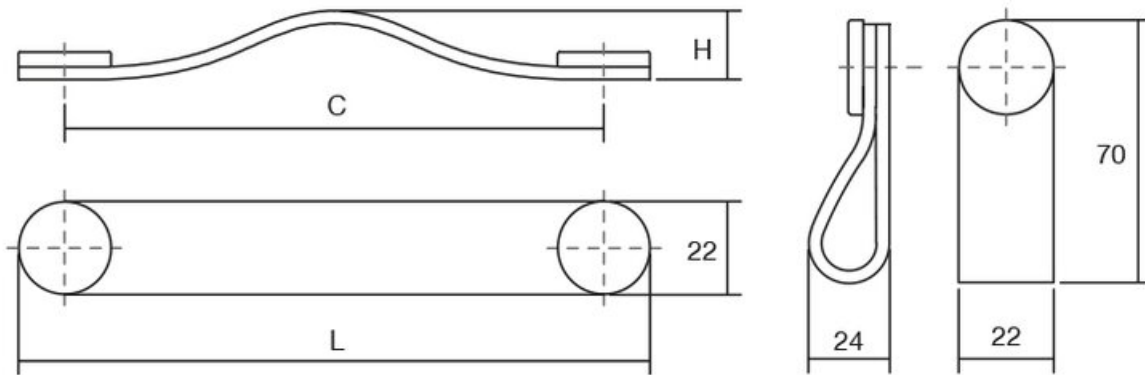
The Flex handle, made in leather, gives a warm, organic touch to whatever piece of furniture it may be fitted to. There are various measures to choose from which, combined with its leather finish and metallic buttons, means it can be fitted to decorative furniture in general, especially in bedrooms, dressing areas and as part of auxiliary furniture. It is made of the highest quality Spanish leather with the buttons manufactured in zamak.

### Included Products

Industry standard mounting hardware



## Technical Documents

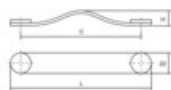


View this product online at <https://marathonhardware.com/pd/V0404070P26M2>

## Technical Documents



**NEW!**  
**FLEXA 0404**  
Compact, Robust, Powerful, Quiet



	3d (H2O)	3d (H2O)	3d (H2O)						
	Bridge	Bridge	Bridge	Back					
	Bridge	Stomach	Bridge	Bridge	C	L	W	H	W
01 Polished chrome / Chrome (left)	041010P0010	041010P0010	041010P0010	041010P0010	120	100	22	21	2.25
01 Polished chrome / Chrome (right)	041010P0010	041010P0010	041010P0010	041010P0010	100	150	22	21	2.25
020 Bronze / Silver	041010P0110	041010P0110	041010P0110	041010P0110	120	110	22	21	2.25
030 Bronze / Silver	041010P0110	041010P0110	041010P0110	041010P0110	100	100	22	21	2.25
040 Black / Silver	041010P0042	041010P0042	041010P0042	041010P0042	120	110	22	21	2.25
050 Black / Silver	041010P0042	041010P0042	041010P0042	041010P0042	100	100	22	21	2.25
27 Bronze / Bronze	041010P0027	041010P0027	041010P0027	041010P0027	120	110	22	21	2.25
28 Bronze / Gold	041010P0027	041010P0027	041010P0027	041010P0027	100	100	22	21	2.25



View this product online at <https://marathonhardware.com/pd/V0404070P26M2>

