

Adhesive Strike Plate for Push Devices



Part Number: SDP38XX91

Salice Strike Plate for Push Devices

Retaining catch with adhesive. 20x14 mm.

Compatible Hinges ----- Salice Push

Product Description

Retaining catch with adhesive. 20x14 mm.



Technical Documents

Magnetic Push - Magnetic release devices and retaining catches

DPMSNB - beige



DPMSNG - grey



Release device.
ø 10 mm, 40 mm length.

Packing
Boxes 250 pcs.
Cartons 1.500 pcs.

DPASNB - beige



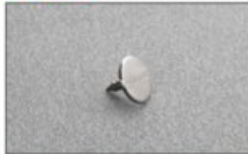
DPASNG - grey



Optional supplementary release device to increase the magnetic holding strength. It must always be used together with the DPM. The suggested position of the DPA is the point of pressure on the door. The DPA can be positioned at any point along the opening edge of the door. ø 10 mm, 40 mm length.

Packing
Boxes 250 pcs.
Cartons 1.500 pcs.

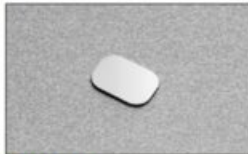
DP28SN9



Retaining catch to be inserted.
ø 11.5 mm.

Packing
Boxes 250 pcs.

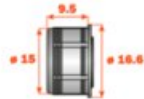
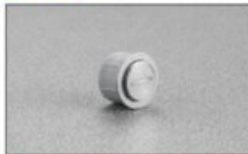
DP38XX91



Retaining catch with adhesive.
20x14 mm.

Packing
Boxes 250 pcs.

DP39XXG



Adjustable magnetic retaining catch.
ø16.6 mm

Packing
Boxes 250 pcs.

SP44XX_



Spacer for inset door to be used together with DP82XX_R.

SP44XXG = grey
SP44XXB = beige

Packing
Boxes 250 pcs.

View this product online at <https://marathonhardware.com/pd/SDP38XX91>

