

# 110 Degree, Full Overlay, Self-Closing Hinge, Dowel

**Part Number: SC2R6A99**



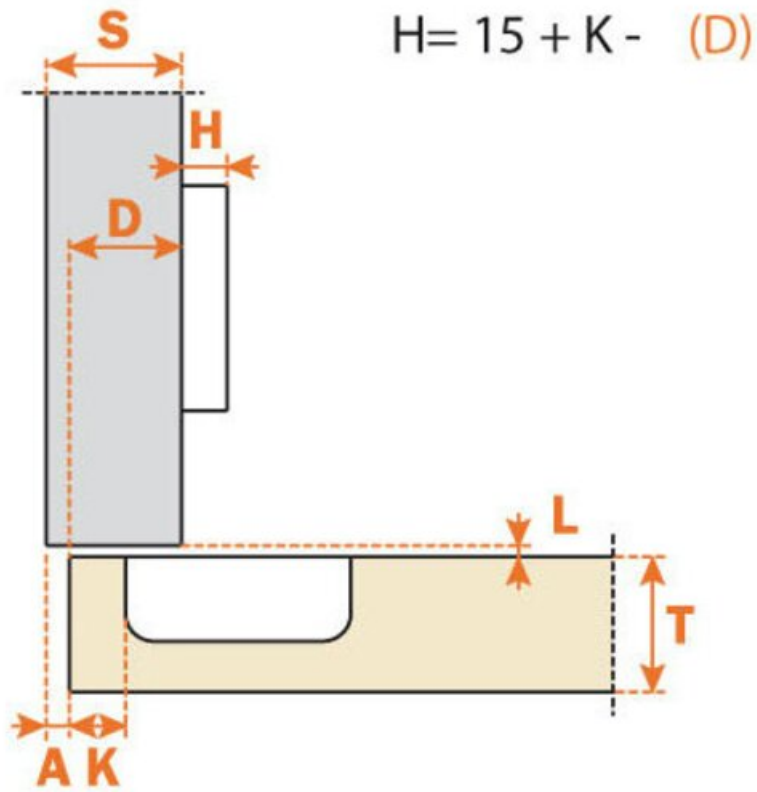
Salice Hinge, Self Close, 110°, Full Overlay, 11mm Cup Depth, Dowels.

Salice Series 200 Hinge, Self Close, 110°, Full Overlay, 11mm Cup Depth, Dowels. 300 pcs / CASE.

Angle .....	110
Application Type .....	Full Overlay
Closing Type .....	Self-Close
Door Type .....	Standard Door
Finish .....	Nickel
Hinge Cup Depth .....	11 mm
Hinge Cup diameter .....	35 mm
Hinge Door Drilling Distance .....	3 to 6 mm
Hinge Door Thickness .....	16 to 26 mm
Material .....	Steel
Mounting Type .....	Dowels



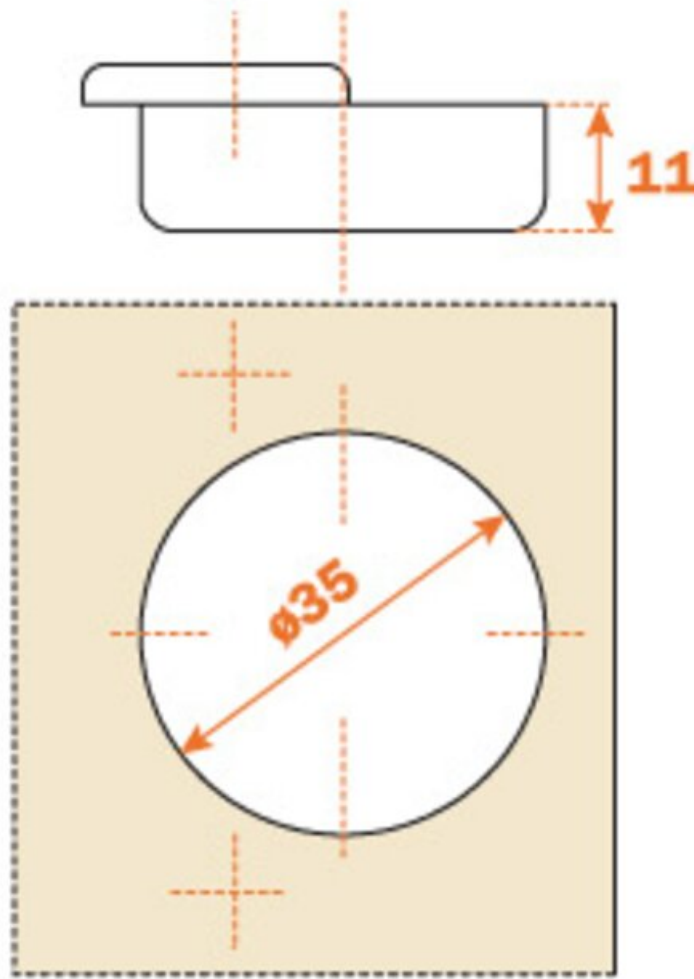
## Technical Documents



View this product online at <https://marathonhardware.com/pd/SC2R6A99>



## Technical Documents



View this product online at <https://marathonhardware.com/pd/SC2R6A99>

---

Technical Documents



View this product online at <https://marathonhardware.com/pd/SC2R6A99>

Technical Documents



**hinges**

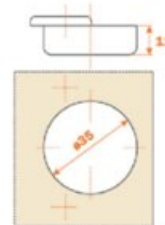
automatic closing / door thickness 16 - 26 mm / standard applications



**Series 200**

110° OPENING  
Traditional or snap-on assembly of the door

When a greater opening angle is required.  
11 mm deep metal cup.  
110° opening.  
Possible drilling distance on the door (K): from 3 to 6 mm.  
Compatible with all traditional Series 200 mounting plates and with all Domi snap-on mounting plates.



**ARTURO SALICE S.p.A.** (Incorporated in Italy)  
Via Provinciale Novorotonda, 10  
33050 NOVOROTONDA (UDINE) ITALIA  
TEL. 0431 794244  
FAX 0431 791508  
www.salicehardware.com

**DEUTSCHE SALICE GmbH**  
74382 NECKARHARTHEIM  
www.salicehardware.com  
**SALICE UK Ltd.**  
HUNTINGDON CAMBS PE28 6PN  
www.saliceuk.co.uk

**SALICE FRANCE S.A.R.L.**  
06000 ANSIS  
www.salicehardware.com  
**SALICE CANADA Inc.**  
MISSISSAUGA, ONTARIO L4X 1Y1  
www.salicehardware.com

**SALICE AMERICA Inc.**  
CHARLOTTE NC 28217  
www.salicehardware.com  
**SALICE ESPAÑA, S.L.L.**  
08043 L'HOSPITALET DELS  
www.salicehardware.com

View this product online at <https://marathonhardware.com/pd/SC2R6A99>

