

165 Degree, Inset, Self-Closing, Dowels



Part Number: SC2RFP99

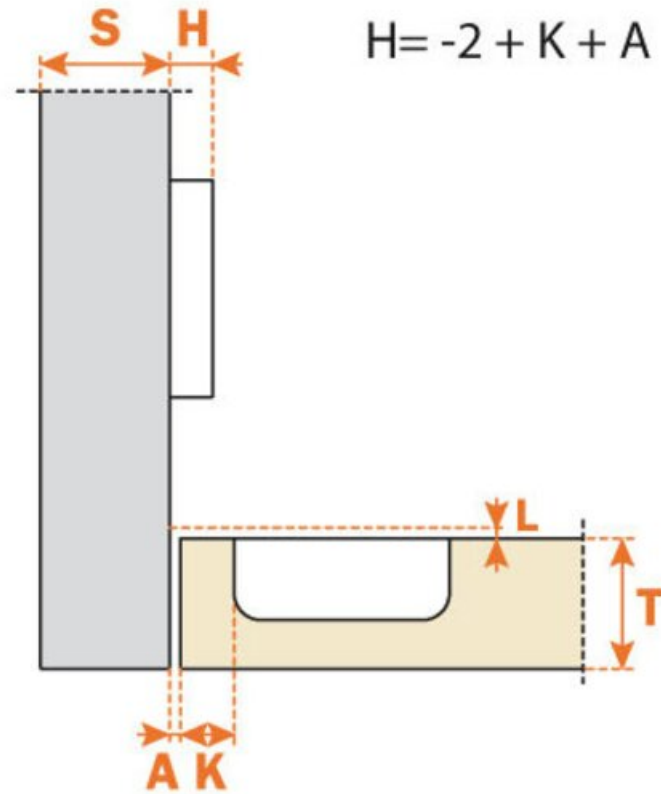
Salice Hinge, Self Close, 165°, Full Inset, 11mm Cup Depth, Dowels.

Salice Series 200 Hinge, Self Close, 165°, Full Inset, 11mm Cup Depth, Dowelled. 100 pcs / CASE.

Angle	165
Application Type	Inset
Closing Type	Self-Close
Door Type	Standard Door
Finish	Nickel
Hinge Cup Depth	11 mm
Hinge Cup diameter	35 mm
Hinge Door Drilling Distance	3 to 8 mm
Hinge Door Thickness	16 to 25 mm (5/8" to 1")
Material	Steel
Mounting Type	Dowels

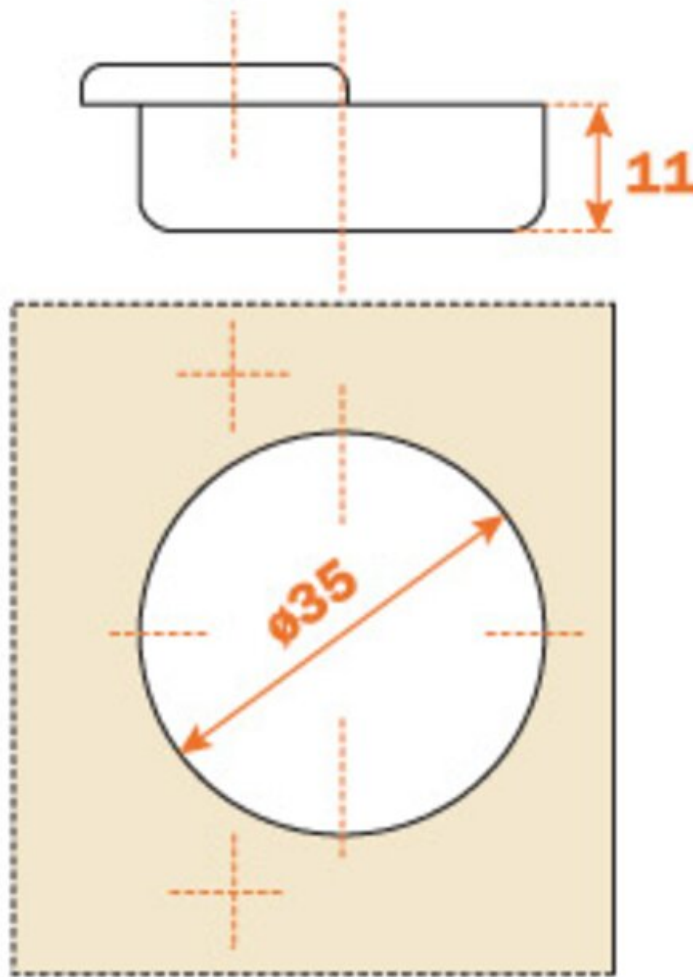


Technical Documents



View this product online at <https://marathonhardware.com/pd/SC2RFP99>

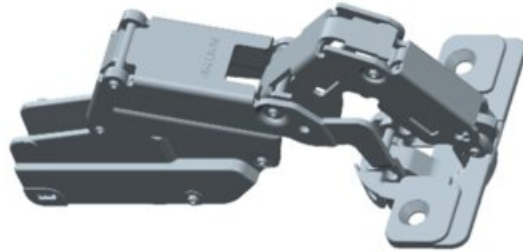
Technical Documents



View this product online at <https://marathonhardware.com/pd/SC2RFP99>



Technical Documents



View this product online at <https://marathonhardware.com/pd/SC2RFP99>

Technical Documents



hinges

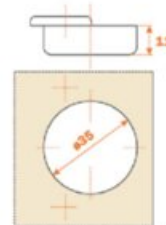
automatic closing / door thickness 16 - 26 mm / standard applications



Series 200

165° OPENING
Traditional or snap-on assembly of the door

Hinge with greater opening angle and reduced operating profile.
11 mm deep die-cast cup.
165° opening.
Possible drilling distance on the door (K): from 3 to 8 mm.
Compatible with all traditional Series 200 mounting plates and with all Domi snap-on mounting plates.



ARTURO SALICE S.p.A. (Incorporated in Italy) (Distributore Unico Italia)
 VIA PROVINCIALE NEVORATESE, 10
 22040 NUVOLARE (COMO) ITALIA
 TEL. 031 70424
 FAX 031 70108
 info.salice@pubbli.com

DEUTSCHE SALICE GmbH
 74362 NEDERHARTHEIM
 www.salice.com/de

SALICE FRANCE S.A.R.L.
 08000 ANSIS
 www.salice.com/fr

SALICE AMERICA Inc.
 CHARLOTTE NC 28227
 www.salice.com/us

www.salice.com
 CAPITAL SOC. € 28.000.000 I.V.
 S.P.A. P. IVA 00211850130
 REG. IMPRESA COMO 00211850130
 ISCRIZIONE IN RECHES

SALICE UK Ltd.
 HUNTINGDON CAMBS PE28 6PN
 www.salice.com/uk

SALICE CANADA Inc.
 MISSISSAUGA, ONTARIO L4L 5Y5
 www.salice.com/ca

SALICE ESPAÑA, S.L.L.
 08043 URNÀS LEIERS
 www.salice.com/es

View this product online at <https://marathonhardware.com/pd/SC2RFP99>

