

Hinge 94° F-Series F/S FOL 40mm Cup Screw-On



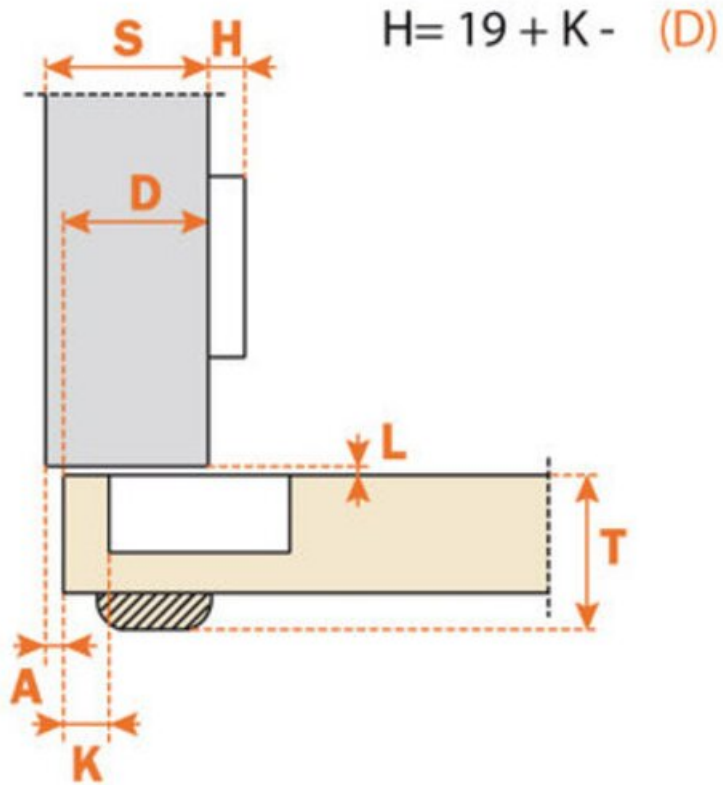
Part Number: SCFA5A99

Salice Hinge, Free Swing / Unsprung, 94° Full Overlay, 13mm Cup Depth, 40mm Cup Diameter, Screw On.

Angle	94
Application Type	Full Overlay
Closing Type	Free-Swinging / Unsprung
Door Type	Thick Door
Finish	Nickel
Hinge Cup Depth	13 mm
Hinge Cup diameter	40 mm
Hinge Door Drilling Distance	3 to 15 mm
Hinge Door Thickness	20 to 40 mm
Material	Steel
Mounting Type	Screw-On



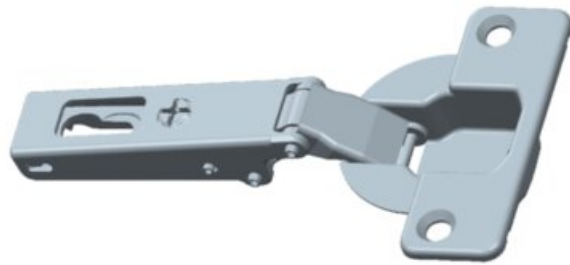
Technical Documents



View this product online at <https://marathonhardware.com/pd/SCFA5A99>

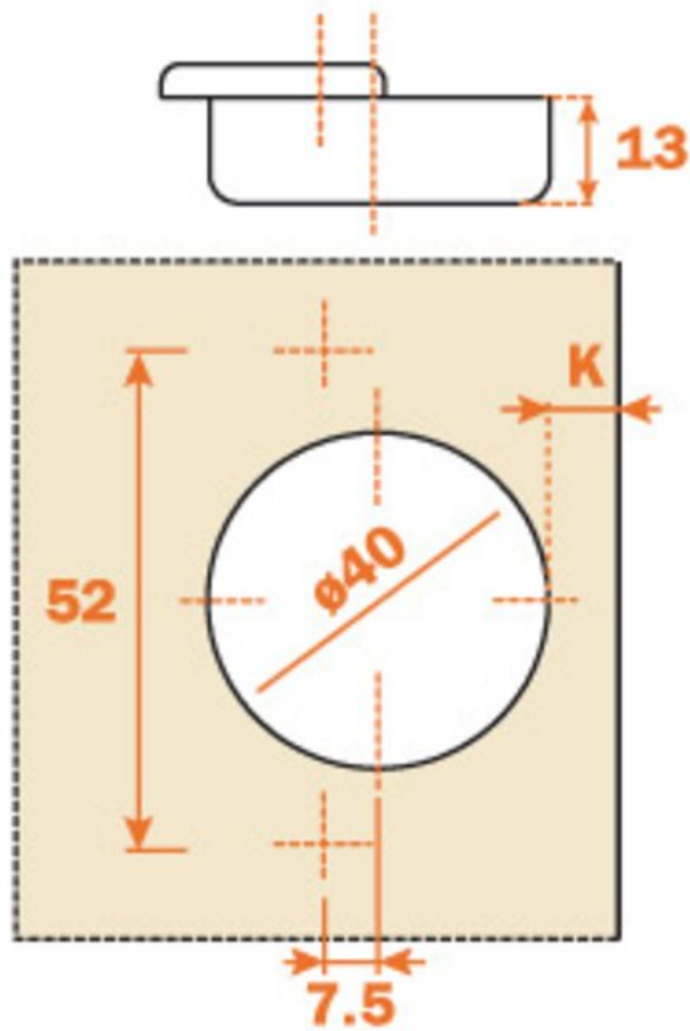


Technical Documents



View this product online at <https://marathonhardware.com/pd/SCFA5A99>

Technical Documents



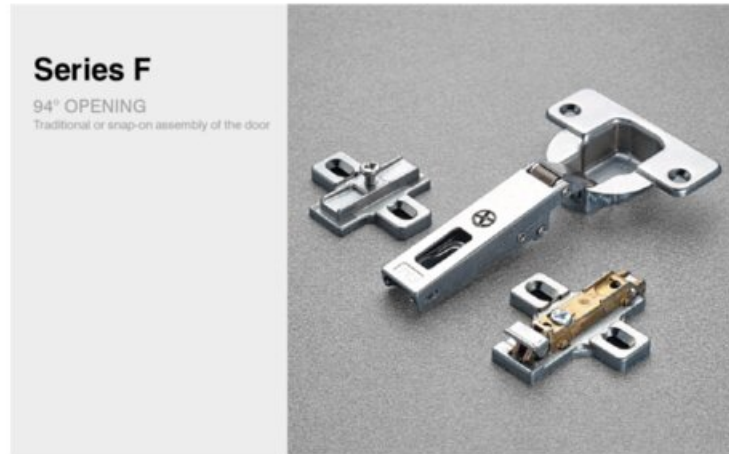
View this product online at <https://marathonhardware.com/pd/SCFA5A99>

Technical Documents



hinges

automatic closing / door thickness 20 - 40 mm or with profiles / standard applications



Series F

94° OPENING

Traditional or snap-on assembly of the door

For profile and thicker doors (max. 40 mm).
 13 mm deep steel cup.
 40 mm cup diameter.
 94° opening.
 Possible drilling distance on the door (K): from 3 to 15 mm.
 Compatible with all traditional Series 200 mounting plates and with all Domi snap-on mounting plates.



ARTURO SALICE S.p.A. (Incorporated in Italy) (Incorporated in Italy)
 VIA PROVINCIALE NEVORATESE, 10
 22040 NUVOLARE (COMO) ITALIA
 TEL. 031 70424
 FAX 031 70108
www.salicehardware.com

DEUTSCHE SALICE GmbH
 74382 NECKARHARTHEIM
 www.salicehardware.com
SALICE UK Ltd.
 HUNTINGDON CAMBS PE28 6PN
 www.salicehardware.com

SALICE FRANCE S.A.R.L.
 08000 ANSIS
 www.salicehardware.com
SALICE CANADA Inc.
 MISSISSAUGA, ONTARIO L4L 5Y5
 www.salicehardware.com

SALICE AMERICA Inc.
 CHARLOTTE NC 28227
 www.salicehardware.com
SALICE ESPAÑA, S.L.L.
 08043 L'HOSPITALET DEL
 www.salicehardware.com

View this product online at <https://marathonhardware.com/pd/SCFA5A99>

