

Hinge 94° F-Series S/C HOL 40mm Cup Screw-On

Part Number: SCFA7G99

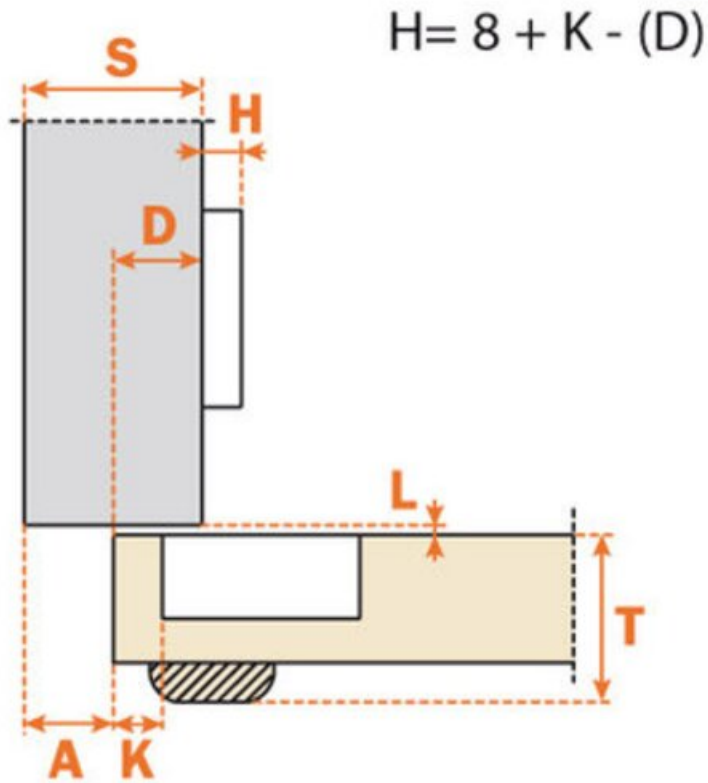


Salice Hinge, Self Close, 94° Half Overlay, 13mm Cup Depth, 40mm Cup Diameter, Screw On.

Angle	94
Application Type	Half Overlay
Closing Type	Self-Close
Door Type	Thick Door
Finish	Nickel
Hinge Cup Depth	13 mm
Hinge Cup diameter	40 mm
Hinge Door Drilling Distance	3 to 15 mm
Hinge Door Thickness	20 to 40 mm
Material	Steel
Mounting Type	Screw-On

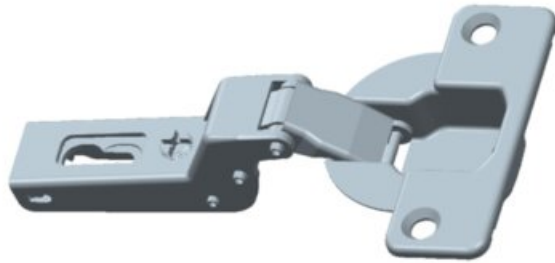


Technical Documents



View this product online at <https://marathonhardware.com/pd/SCFA7G99>

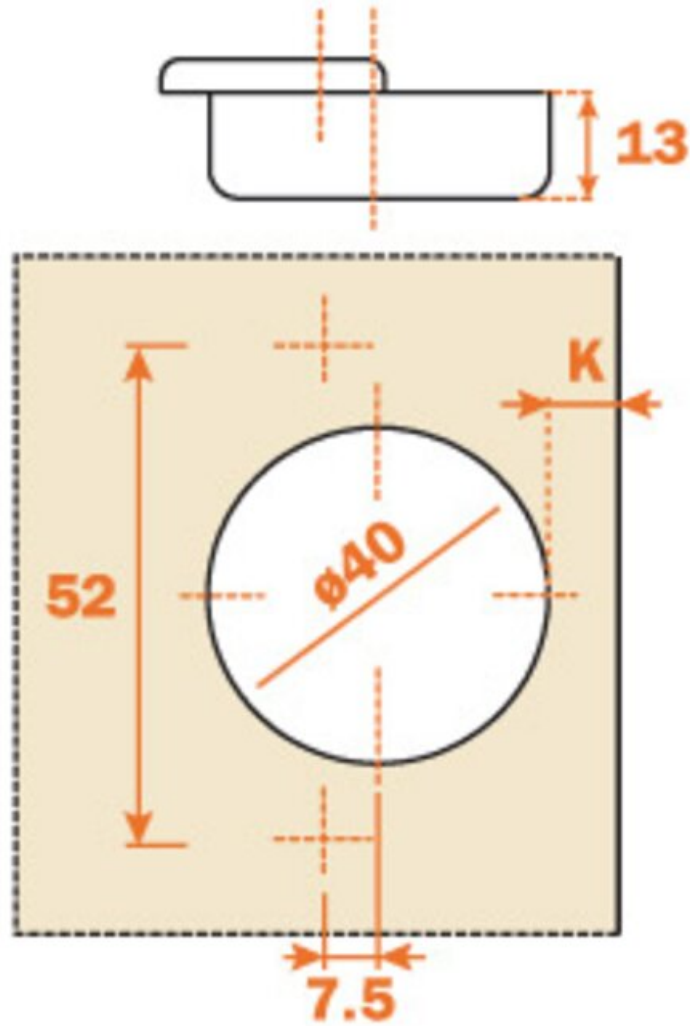
Technical Documents



View this product online at <https://marathonhardware.com/pd/SCFA7G99>



Technical Documents



View this product online at <https://marathonhardware.com/pd/SCFA7G99>



Technical Documents



hinges

automatic closing / door thickness 20 - 40 mm or with profiles / standard applications

Series F

94° OPENING

Traditional or snap-on assembly of the door



For profile and thicker doors (max. 40 mm),
13 mm deep steel cup,
40 mm cup diameter,
94° opening.
Possible drilling distance on the door (K): from 3 to 15 mm.
Compatible with all traditional Series 200 mounting plates and
with all Domi snap-on mounting plates.



ARTURO SALICE S.p.A. (Incorporated in Italy) (Incorporated in Italy)
Via Provinciale Novorotone, 10
32040 NOVOROTONE (CONEGLIANO)
TEL. 0435 794244
FAX 0435 791508
www.salicehardware.com

DEUTSCHE SALICE GmbH
74382 NECKARHARTHEIM
www.salicehardware.com
SALICE UK Ltd.
HUNTINGDON CAMBS PE28 6PN
www.salicehardware.com

SALICE FRANCE S.A.R.L.
09400 ANDELS
www.salicehardware.com
SALICE CANADA Inc.
MISSISSAUGA, ONTARIO L4X 1Y1
www.salicehardware.com

SALICE AMERICA Inc.
CHARLOTTE NC 28227
www.salicehardware.com
SALICE ESPAÑA, S.L.L.
08403 L'HOSPITALET DELS ENCS
www.salicehardware.com

View this product online at <https://marathonhardware.com/pd/SCFA7G99>

