

# Hinge 94° F-Series FOL S/C 40mm Cup Dowels

**Part Number: SCFB7A99**

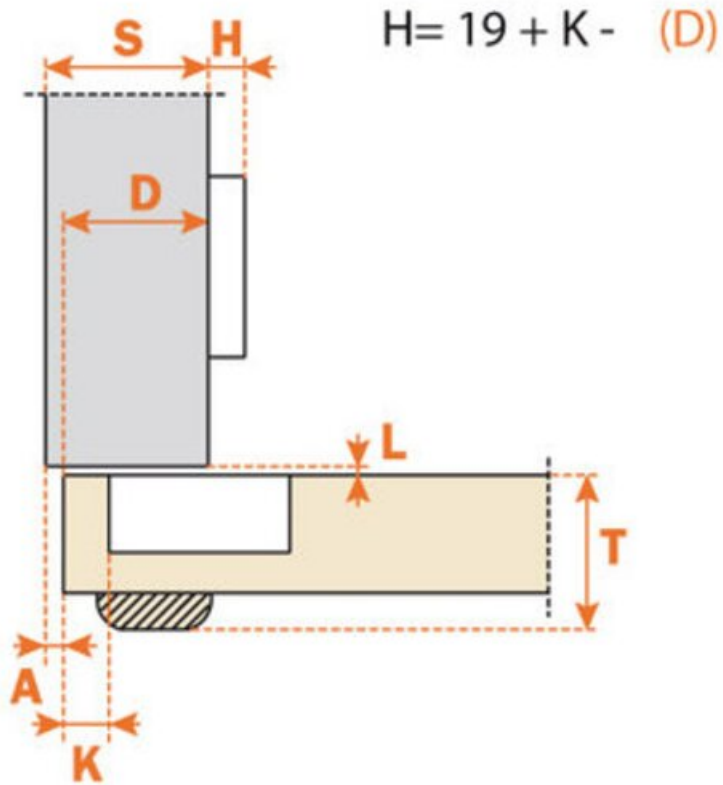


Salice Hinge, Self Close, 94° Full Overlay, 13mm Cup Depth, 40mm Cup Diameter, Dowels

Angle	94
Application Type	Full Overlay
Closing Type	Self-Close
Door Type	Thick Door
Finish	Nickel
Hinge Cup Depth	13 mm
Hinge Cup diameter	40 mm
Hinge Door Drilling Distance	3 to 15 mm
Hinge Door Thickness	20 to 40 mm
Material	Steel
Mounting Type	Dowels



## Technical Documents

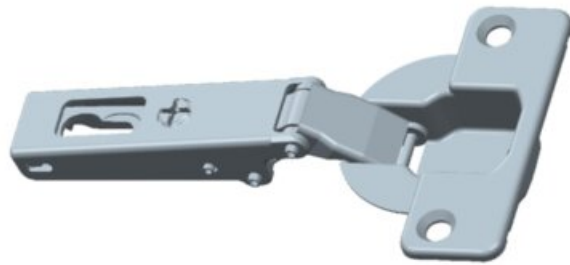


View this product online at <https://marathonhardware.com/pd/SCFB7A99>



---

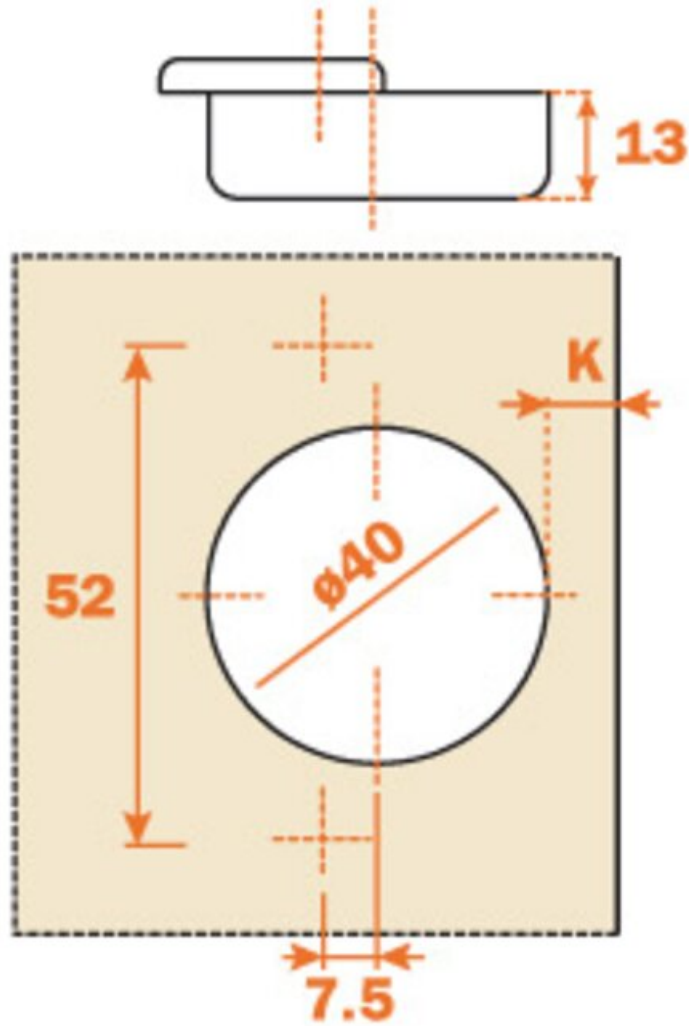
## Technical Documents



View this product online at <https://marathonhardware.com/pd/SCFB7A99>



## Technical Documents



View this product online at <https://marathonhardware.com/pd/SCFB7A99>



## Technical Documents



### hinges

automatic closing / door thickness 20 - 40 mm or with profiles / standard applications

#### Series F

94° OPENING

Traditional or snap-on assembly of the door



For profile and thicker doors (max. 40 mm),  
13 mm deep steel cup,  
40 mm cup diameter,  
94° opening.  
Possible drilling distance on the door (K): from 3 to 15 mm.  
Compatible with all traditional Series 200 mounting plates and  
with all Domi snap-on mounting plates.



**ARTURO SALICE S.p.A.** (Incorporated in Italy) (Incorporated in Italy)  
Via Provinciale Novorotone, 10 (Incorporated in Italy)  
32040 NOVOROTONE (CONEGLIANO)  
TEL. 0435 794244  
FAX 0435 791508  
www.salicehardware.com

**DEUTSCHE SALICE GmbH**  
74382 NEDERHARTHEIM  
www.salicehardware.com  
**SALICE UK Ltd.**  
HUNTINGDON CAMBS PE28 6PN  
www.salicehardware.com

**SALICE FRANCE S.A.R.L.**  
09400 ANDELS  
www.salicehardware.com  
**SALICE CANADA Inc.**  
MISSISSAUGA, ONTARIO L4X 1Y1  
www.salicehardware.com

**SALICE AMERICA Inc.**  
CHARLOTTE NC 28227  
www.salicehardware.com  
**SALICE ESPAÑA, S.L.L.**  
08403 L'HOSPITALET  
www.salicehardware.com

View this product online at <https://marathonhardware.com/pd/SCFB7A99>

