

Hinge 106°, 5/8" Overlay, Dowels, 3-Way Cam



Part Number: SCSR3599XR

Salice Face Frame Hinge 106°, 5/8" Overlay, Dowels, 3-Way Cam

Salice Face Frame Hinge 106°, 5/8" Overlay, Screw-On, with 3-way Cam Adjustments

Adjustment Type	3-Way Cam Adjustment
Angle	106
Application Type	Face Frame
Closing Type	Self-Close
Door Type	Face Frame
Finish	Nickel
Hinge Cup Depth	11
Hinge Cup diameter	35 mm
Hinge Door Thickness	Up to 3/4" Thick
Hinge Type	Integrated Winged Mounting Plate
Mounting Type	Dowels
Overlay	5/8 in

Product Description

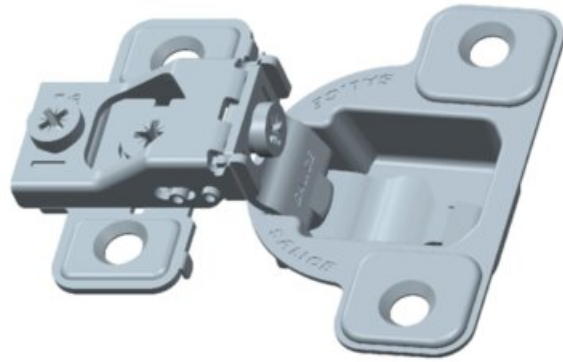
Salice Excentthree Face Frame hinges enable easy and simple installation while combined with their superior technical features ensuring that you receive a reliable and consistent door action. These low-profile, one-piece face frame hinges provide eccentric cams for three way adjustments, including side-to-side, up-down, and in-and-out, providing you with perfect alignment. Available in both screw-on and doweled versions, they will enable long-lasting attachment to the frame with superior stability and zero door protrusion. Expect a lifetime of smooth opening and closing in your kitchen when you pick Salice.

Product Advantages

- Salice provides a lifetime warranty
- Precise door alignment
- Zero door protrusion
- Boring pattern same as the industry standard

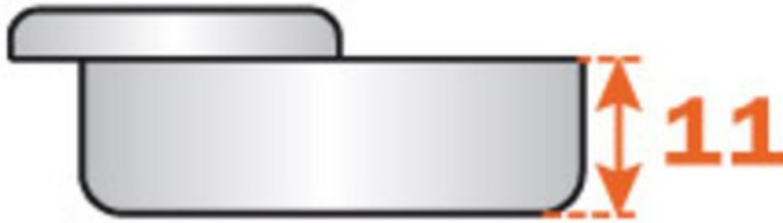


Technical Documents



View this product online at <https://marathonhardware.com/pd/SCSR3599XR>

Technical Documents



View this product online at <https://marathonhardware.com/pd/SCSR3599XR>

Technical Documents



hinges

automatic closing / face frame hinge / standard applications



Stamped steel.
Cup depth 11 mm (7/16").
Opening 106° degrees.
Drilling distance (K) fixed at 2.5 mm (3/32").
Gap between door and frame (L) = 4.6 mm.



For overlays from 1/2" through 3/4" the "A" value (Reveal) = 8.3 mm for (21/64") square edge doors at 90° opening.

For overlays from 1" through 1-7/16" the "A" value (Reveal) = 5.2 mm for (3/4") square edge doors at 90° opening.

ARTURO SALICE S.p.A. (società con unico socio)
Via Provinciale Novoratese, 10
22060 Novoratese (Como) Italia
Tel. 031 70424
Fax 031 70108
info.salice@salice.com
www.salice.com
CAPITAL SOC. € 28.000.000 I.V.
S.P.A. P. IVA 00211850130
RIS. IMPRESA COMO 00211850130
SCA COMO 1790288

DEUTSCHE SALICE GmbH
TALBO WERKWERKSTADT
www.salice.com/de
SALICE UK Ltd.
HUNTINGDON CAMBS PE28 6PN
www.salice.co.uk

SALICE FRANCE S.A.R.L.
DESIGN ANTIKIS
www.salice.com/fr
SALICE CANADA Inc.
MIRABELLA, QUÉBEC J5L 8Y1
www.salice.com/ca

SALICE AMERICA Inc.
CHARLOTTE NC 28227
www.salice.com/us
SALICE ESPAÑA, S.L.
GRUPO UNIVOLERS
www.salice.com/es

View this product online at <https://marathonhardware.com/pd/SCSR3599XR>

