



Hinge 106°, 3/8" Overlay, Screw-On, 2-Way Cam

Part Number: SCSP3999

Salice Face Frame Hinge 106°, 3/8" Overlay, Screw-On, 2-Way Cam

Salice Face Frame Hinge 106°, 3/8" Overlay, Screw-On, with 2-way Cam Adjustments

<div>
</div>

| | |
|----------------------|------------------|
| Adjustment Type | 2-Way Cam Adjust |
| Angle | 106 |
| Application Type | Face Frame |
| Closing Type | Self-Close |
| Door Type | Face Frame |
| Finish | Nickel |
| Hinge Cup Depth | 11 |
| Hinge Door Thickness | Up to 3/4" Thick |
| Mounting Type | Screw-On |
| Overlay | 3/8 in |

Product Description

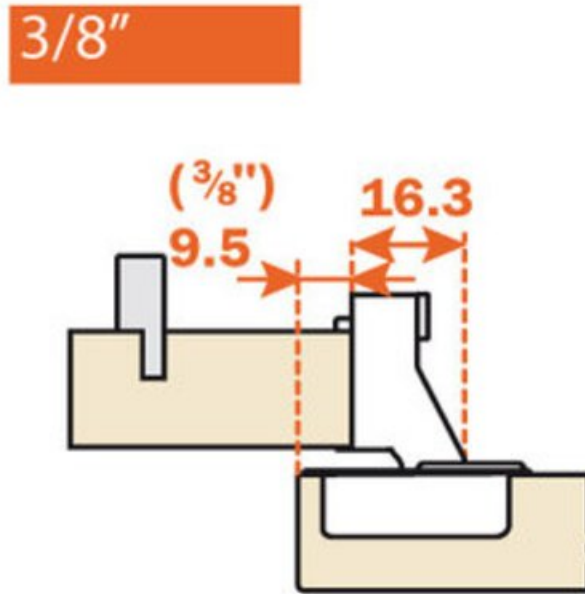
Salice Excentra Face Frame hinges enable easy and simple installation while combined with their superior technical features ensuring that you receive a reliable and consistent door action. These low-profile, one-piece face frame hinges provide eccentric cams for two way adjustments, including side-to-side and in-and-out, providing you with perfect alignment. Available in both screw-on and doweled versions, they will enable long-lasting attachment to the frame with superior stability and zero door protrusion. Expect a lifetime of smooth opening and closing in your kitchen when you pick Salice.

Product Advantages

- Salice provides a lifetime warranty
- Precise door alignment
- Zero door protrusion
- Boring pattern same as the industry standard



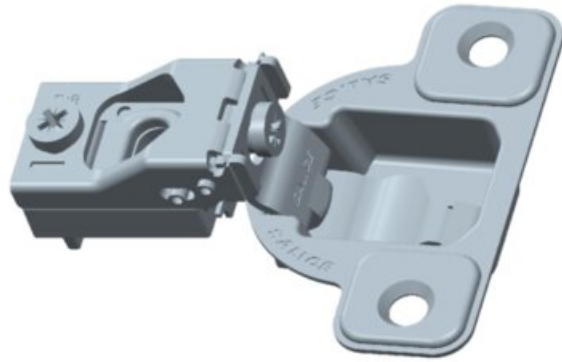
Technical Documents



View this product online at <https://marathonhardware.com/pd/SCSP3999>



Technical Documents



View this product online at <https://marathonhardware.com/pd/SCSP3999>



Technical Documents



View this product online at <https://marathonhardware.com/pd/SCSP3999>

Technical Documents

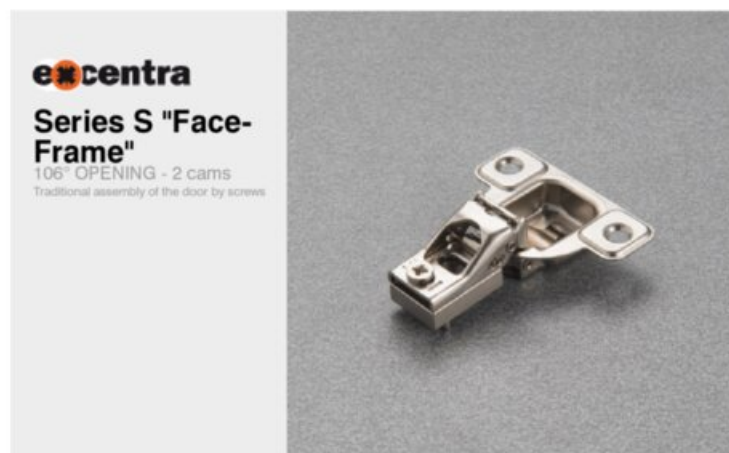


SALICE



hinges

automatic closing / face frame hinge / standard applications



Stamped steel.
Cup depth 11 mm (7/16").
Opening 106° degrees.
Drilling distance (K) fixed at 2.5 mm (3/32").
Gap between door and frame (L) = 4.6 mm.



For overlays from 1/4" through 3/4" the "A" value (Reveal) = 8.3 mm for (21/64") square edge doors at 90° opening.

For overlays from 1" through 1-7/16" the "A" value (Reveal) = 5.2 mm for (3/4") square edge doors at 90° opening.

ARTURO SALICE S.p.A. (incorporated in Italy)
Via Provinciale Novaresa, 10
22060 NOVARATE (COMO) ITALIA
TEL. 031 764424
FAX 031 771608
info.salice@salice.com
www.salice.com
CAPITAL SOC. € 28.000.000 I.V.
S.P.A. P. IVA 00211850130
REG. IMPRES. COMO 00211850130
SCA COMO 1796169

DEUTSCHE SALICE GmbH
TALBO WERKZEUGE GmbH
www.salice.de
SALICE UK Ltd.
HUNTINGDON CAMBS PE28 6PN
www.saliceuk.co.uk

SALICE FRANCE S.A.R.L.
DESIGN ARTISAN
www.salicefrance.com
SALICE CANADA Inc.
MIRAMICHI, QUEBEC L6Y 5Y1
www.salicecanada.com

SALICE AMERICA Inc.
CHARLOTTE NC 28207
www.saliceamerica.com
SALICE ESPAÑA, S.L.
GRAN VÍA DE LA LEY
www.saliceespana.es

View this product online at <https://marathonhardware.com/pd/SCSP3999>

