



Round Stainless Steel / Grey Waste Bin

Part Number: 04-1009-SSG

Round Stainless Steel/Grey Door Mounted Waste Bin

Round Stainless Steel/Grey Door Mounted Swing Out 15L Waste Bin

<div>
</div>

Bin Included? - - - - -	Included
Colour - - - - -	Grey / Stainless Steel
Cover Included? - - - - -	Included
Depth - - - - -	15-1/2 in
Diameter - - - - -	11 in
Material - - - - -	Plastic / Stainless Steel
Mounting Type - - - - -	Door Mounted
Suggested for Cabinet (Door) Width - - - - -	400 mm (16 in)
Volume - - - - -	15 L
Waste Type - - - - -	Pivot
Width - - - - -	14-1/2 in

Product Description

Round Stainless Steel/Grey Door Mounted Swing Out 15L Waste Bin. Mount on door with full overlay hinges Product dimensions listed are given as best estimate based upon an installed demo unit in our showroom. Installed height is about 15-1/2" from base to top of lid cover when opened. Diameter of the unit is approximately 11", and the width is 14-1/2" at the maximum width point during the opening swing. Our expectation is installed in cabinets of 400mm (15-3/4") or greater but you may need to do a practical trial if you have dimensions less than this but within the dimensions given above.

Product Advantages

- Universal Mounting
- Lid Raises on Opening
- Stylish Stainless Steel

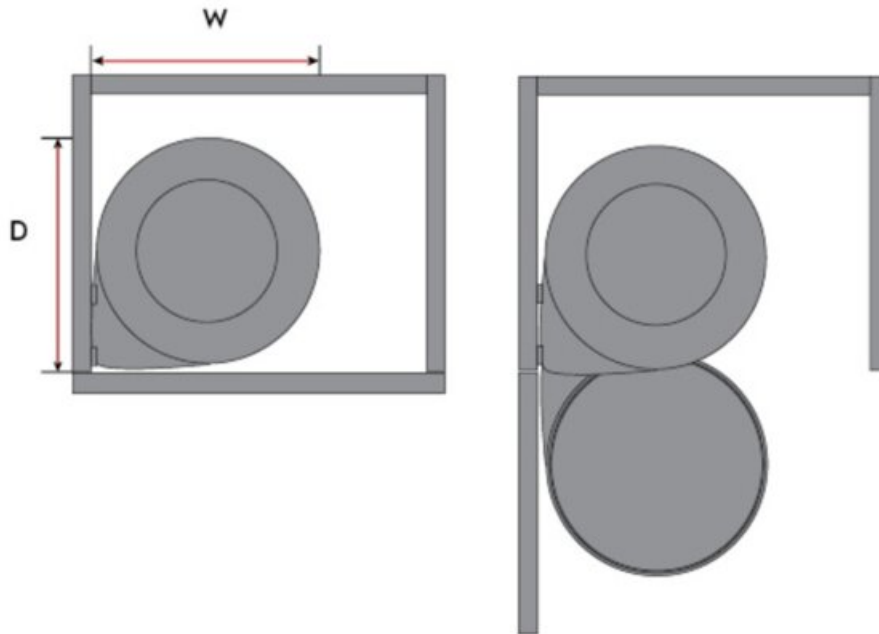


Technical Documents

Planning

Minimum Interior Cabinet Dimensions mm/inch

W x H x D 365 x 400 x 330mm (14 3/8 x 15 3/4 x 13")



View this product online at <https://marathonhardware.com/pd/04-1009-SSG>

Installation Instruction

It is important to select the correct door-mounting-bracket.

Please use the metal bracket with 95 degrees hinges only!

Please use the plastic bracket with all other, exceeding opening angles!

This will ensure proper operation of your door and of your waste-bin.

- LEFT**
-
-
-
-
-
-

Installation Instruction

The following instructions are intended for the installation of the waste bin into the cabinet.

Please use the metal bracket with 95 degree hinges only!

Please use the plastic bracket with all other, exceeding opening angles!

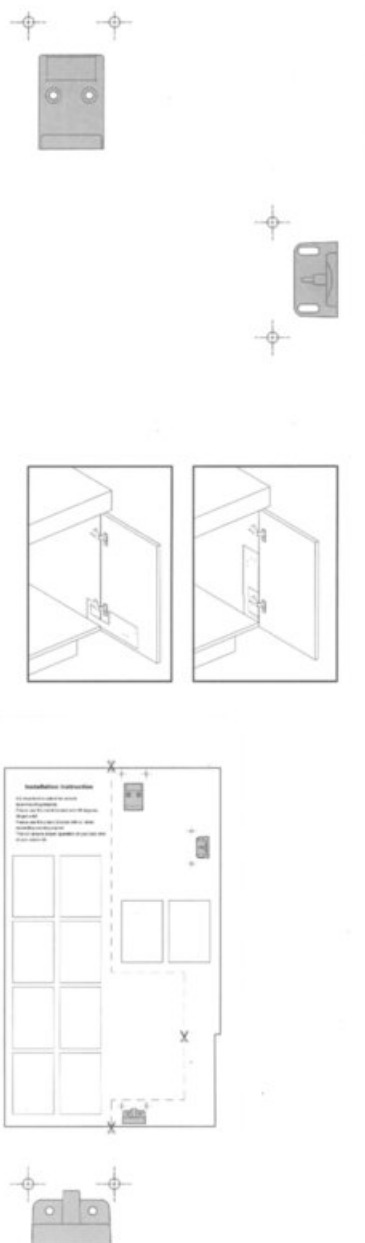
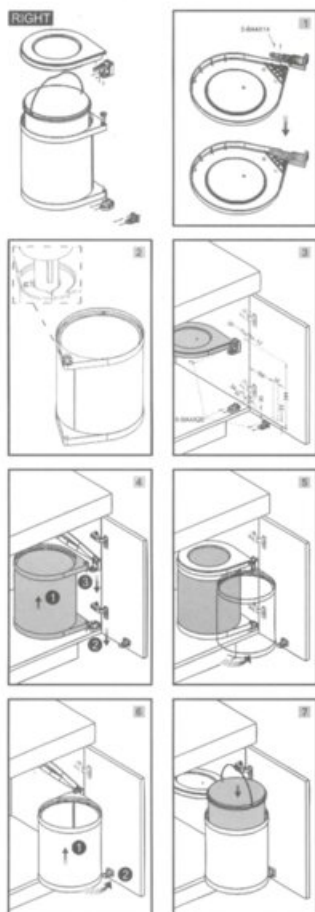
This will ensure proper operation of your door and of your waste-bin.

Page 3 / 5

Technical Documents

Installation Instruction

It is important to select the correct door-mounting-bracket.
Please use the metal bracket with 95 degrees hinges only!
Please use the plastic bracket with all other, exceeding opening angles!
This will ensure proper operation of your door and of your waste-bin.



View this product online at <https://marathonhardware.com/pd/04-1009-SSG>

