



Waste/Recycling Bin 400mm 1x35L Grey

Part Number: 04-UB400-35S-G

UBStor Infinity Waste Storage Solutions, for 400mm wide cabinet, 1x35L Grey Bin

Doublewall waste bin systems are sturdy and reliable, giving you the confidence to recommend and install them in every project. Compatible with DTC Doublewall Drawer Systems.

Bin Included?	Yes
Closing Type	Soft-Close
Cover Included?	Yes
Finish	Grey
Interior Dimensions Required - Depth ---	506 mm (19-29/32 in)
Interior Dimensions Required - Height ---	570 mm (22-7/16 in)
Interior Dimensions Required - Width ---	362 to 368 mm (14-1/4 to 14-1/2 in)
Load Capacity	40kg (88 lbs)
Slide Extension Type	Full Extension
Suggested for Cabinet (Door) Width ----	400 mm (16 in)
Volume	1 x 35L
Waste Type	Side-Mount

Product Description

UBStor Infinity Waste Storage System for doublewall drawers. Modern European design with easily accessible bins.

Product Advantages

- Designed for 400mm (15-3/4") outside width cabinets
- Requires doublewall drawer system (sold separately)
- Can be installed with DTC Infinity System in White or Grey
- Available finishes: Grey or White (Picture shows Grey)
- Different versions have various bin sizes and quantities
- Load capacity: 40kg (88lbs)

Important Information

Requires 500mm Doublewall Drawer System to install which is sold separately.

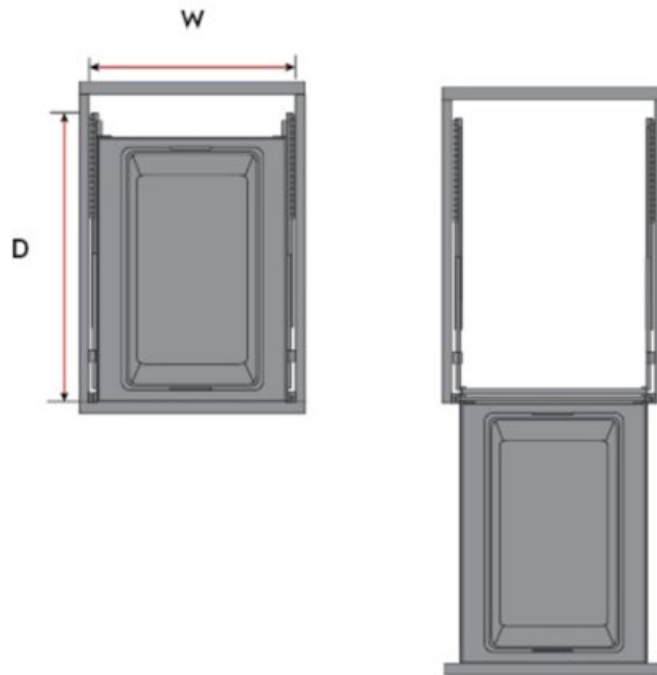


Technical Documents

Planning

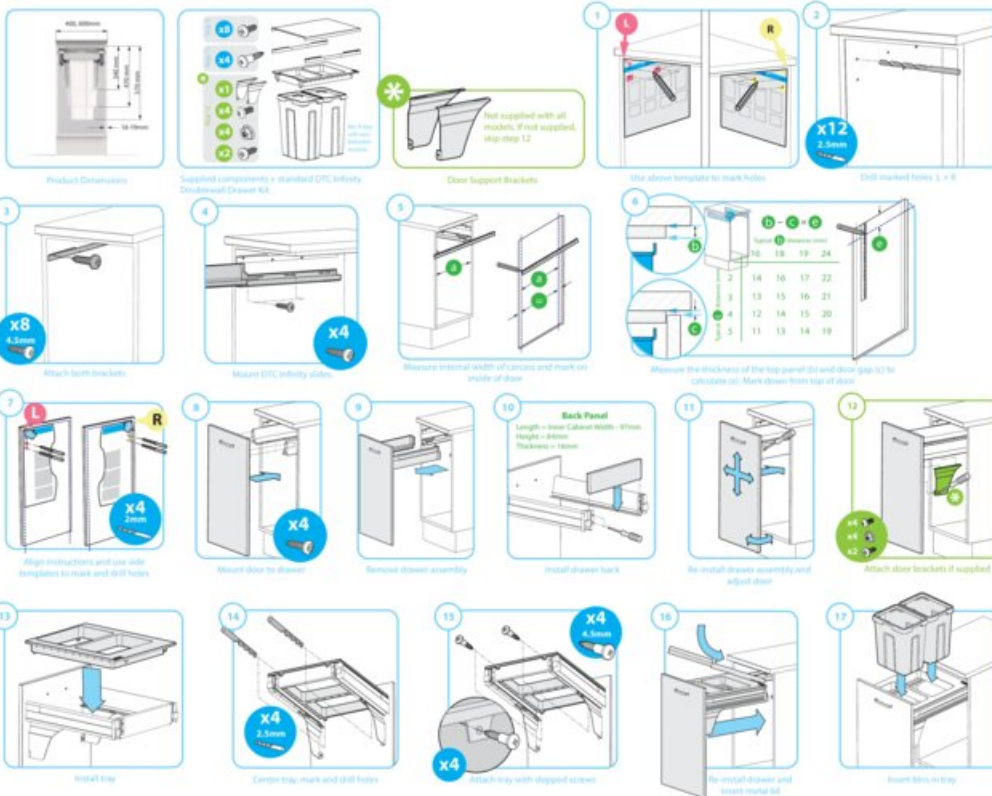
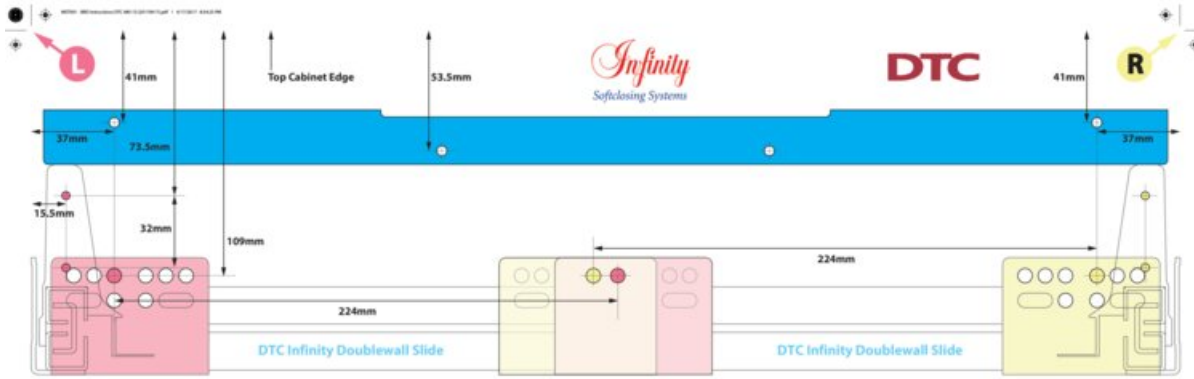
Minimum Interior Cabinet Dimensions mm/inch

W x H x D 362 - 368 x 570 x 506mm (14 1/4 - 14 1/2 x 22 7/16 x 19 15/16")



View this product online at <https://marathonhardware.com/pd/04-UB400-35S-G>

Technical Documents



View this product online at <https://marathonhardware.com/pd/04-UB400-35S-G>

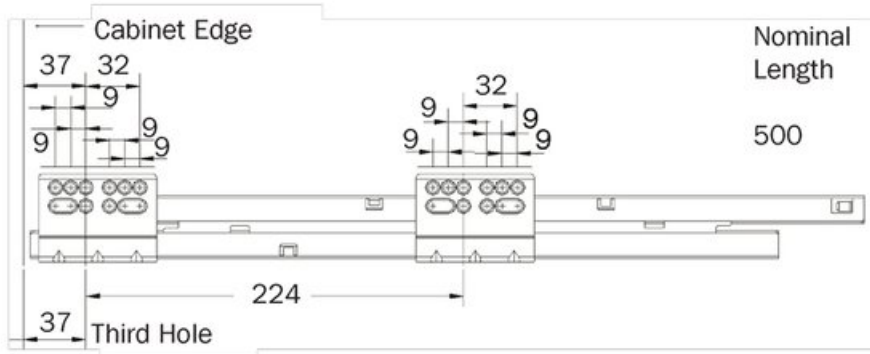


Technical Documents

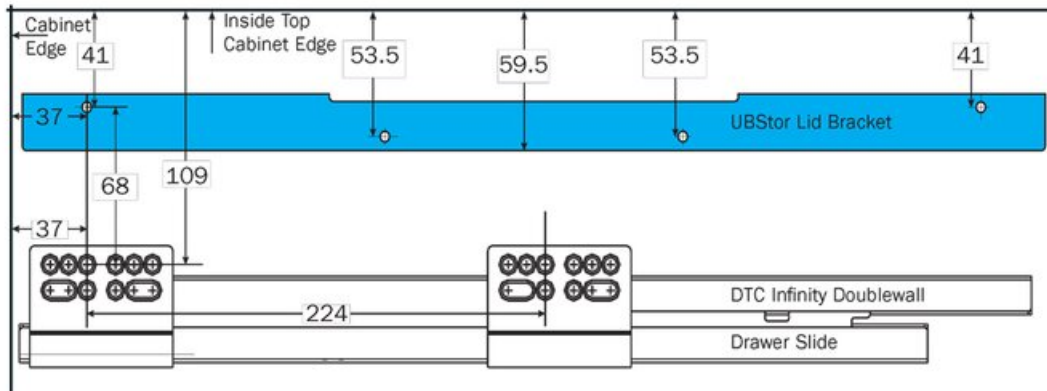
Drilling Pattern for Slide



All calculations are provided in millimeters (mm) and recommended for standard installations.



Drilling Pattern from Inside Cabinet Edges to Lid Mounting Bracket and Slide



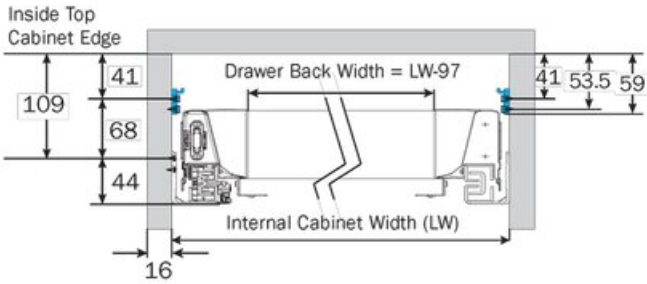
View this product online at <https://marathonhardware.com/pd/04-UB400-35S-G>



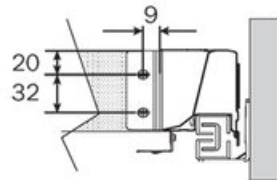
Technical Documents

Installation Drilling Dimensions

Gable Side Drilling

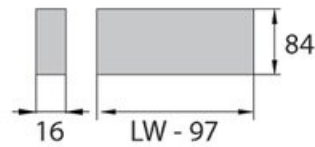


Drawer Back Drilling



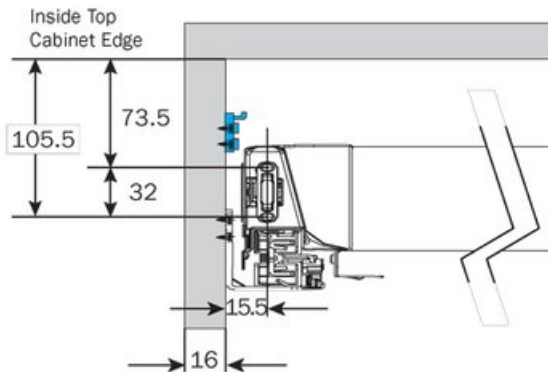
Back and Front Dimensions

Drawer Back Dimensions

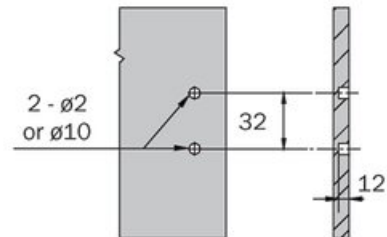


Internal Cabinet Width = LW
 Drawer Back Width = LW-97

Door Front Drilling



Door Front Dimensions



View this product online at <https://marathonhardware.com/pd/04-UB400-35S-G>

