



Float 2 Way Corner with Foot Matte Black

Part Number: 086-Z8ZXE-MB

Two way corner connector for creating a corner that includes adjustable foot. Screws included.

Finish ----- Matte Black

Product Description

Eureka FLOAT is a chic, wall mounted modular shelving system that is extremely versatile and customizable. FLOAT can be arranged in virtually any configuration you can imagine via the multitude of available connectors. FLOAT shelving system can be cut-to-size and assembled into countless designs to either "float" on the wall, or integrate into new or existing cabinetry.

Important Information

Float Bar Profiles are designed to fit 18mm thick shelves flush, so use spacer bracket kits for boards of 8 to 16mm thicknesses. It is possible to mount 19mm (3/4") shelves, we recommend edgebanding your panel as it will sit proud 1mm. For 18mm or less shelves, edgebanding is optional as the shelf sits hidden behind the aluminum profile.

Shelf Cut Dimensions

Wood Shelf:

- Length minus 42mm
- Depth minus 42mm

Glass Shelf:

- Length minus 42mm
- Depth minus 45mm

Product Application

Shelf Dimensions

Wood Shelf:

- Length minus 42mm
- Depth minus 42mm

Glass Shelf:

- Length minus 42mm
- Depth minus 45mm



Technical Documents

Eureka FLOAT 1-Way, 2-Way & 3-Way Corner Connectors

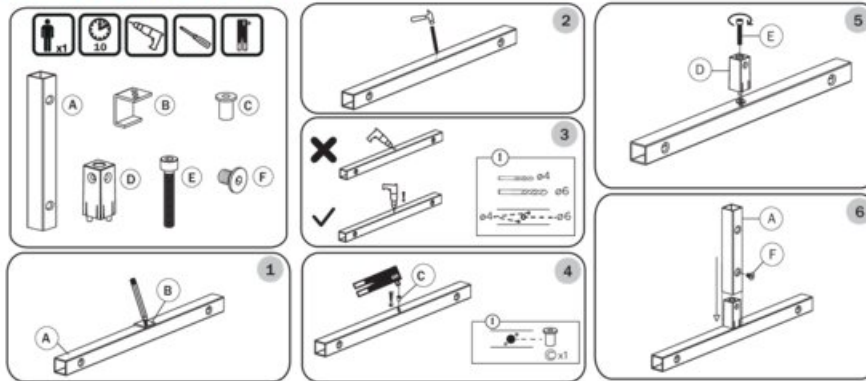
Item Description	Part#
1 Way Hidden Connector, Bare Metal	086-Z0ZXE-MB
1 Way Leg with Adjust. Foot, Matte Black	086-E4RAM-MB
2 Way Corner, Matte Black	086-Z6ZXE-MB
2 Way Corner w/ Adjust Feet, Matte Black	086-Z8ZXE-MB
3 Way Corner A Side with Adjust. Foot	086-Z10ZXE-MB
3 Way Corner B Side with Adjust. Foot	086-Z20ZXE-MB

- 1-Way Leg with Adjustable Foot adds 10mm to the length of your bar and provides an additional 10mm of adjustment range.
- 2-Way and 3-Way Connectors with Adjustable Feet, have the same dimensions as standard connectors, with 15mm of adjustable range.
- Screws are included with Corner Connectors. Extras intended for spares.

Leveller Feet Dimensions and Adjustment Range



Installation Instructions for 1-Way Hidden Connector



View this product online at <https://marathonhardware.com/pd/086-Z8ZXE-MB>

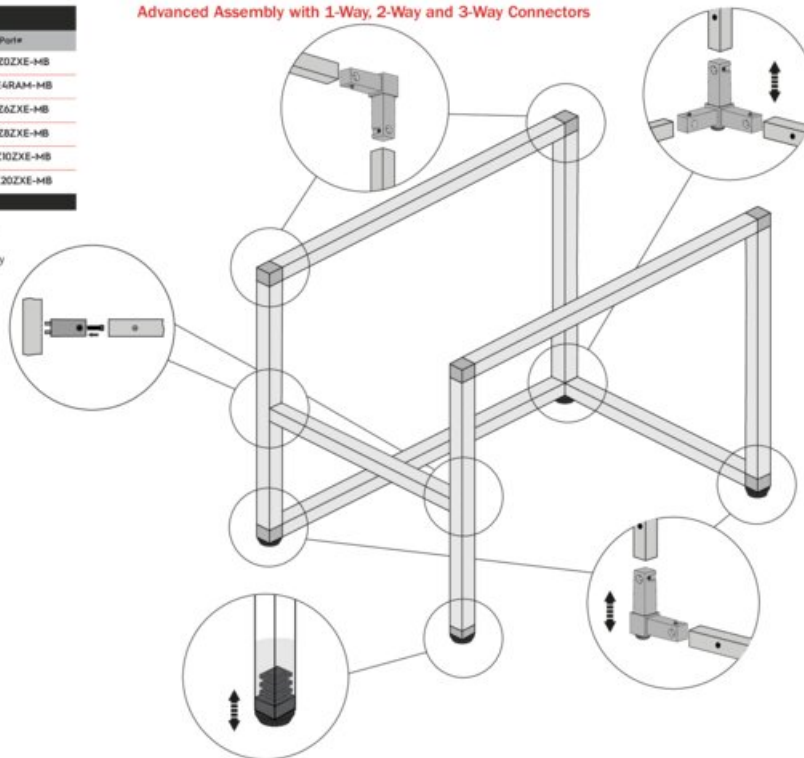


Technical Documents

Eureka FLOAT Corner Connectors	
Item Description	Part #
1 Way Hidden Connector, Bare Metal	086-Z0ZXE-MB
1 Way Leg with Adjust. Foot, Matte Black	086-E4RAM-MB
2 Way Corner, Matte Black	086-Z6ZXE-MB
2 Way Corner w/ Adjust Feet, Matte Black	086-Z8ZXE-MB
3 Way Corner A Side with Adjust. Foot	086-Z10ZXE-MB
3 Way Corner B Side with Adjust. Foot	086-Z20ZXE-MB

- 3-Way Corners are not directionally specific. Use 1 of each type (A/B) at each ends of bar that connects in between. See assembly examples for further direction.
- Screws are included with Corner Connectors. Extras intended for spares.

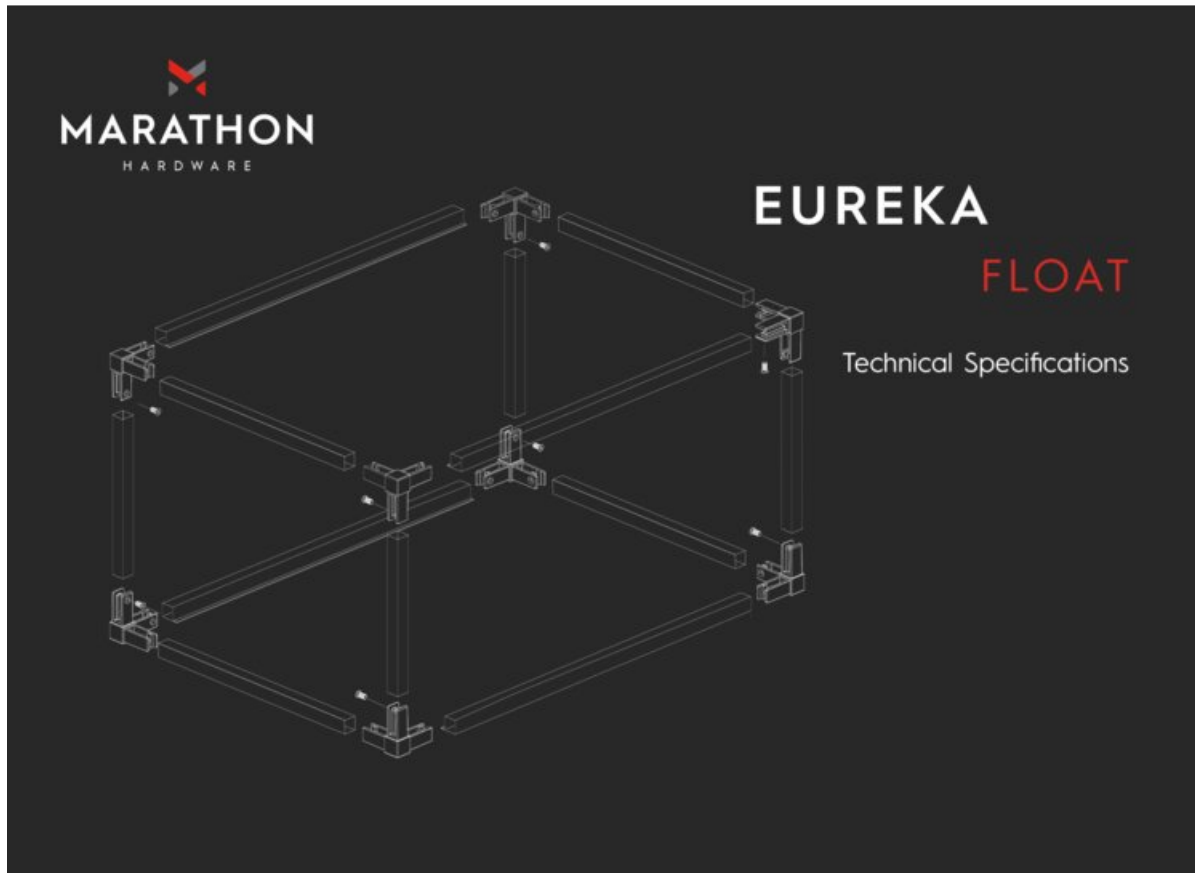
Advanced Assembly with 1-Way, 2-Way and 3-Way Connectors



View this product online at <https://marathonhardware.com/pd/086-Z8ZXE-MB>



Technical Documents



View this product online at <https://marathonhardware.com/pd/086-Z8ZXE-MB>



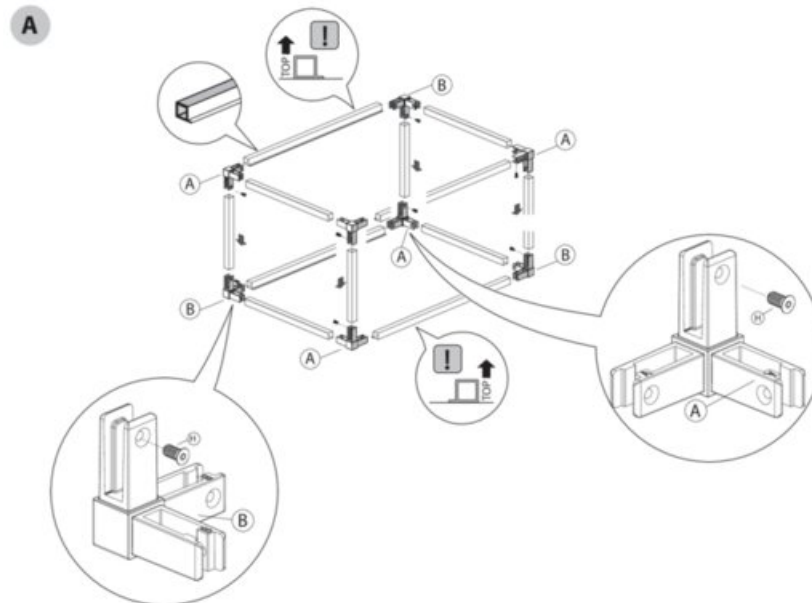
Technical Documents



FLOAT



INSTRUCTIONS



View this product online at <https://marathonhardware.com/pd/086-Z8ZXE-MB>

