



Float 3 Way Corner A w/Foot Matte Black

Part Number: 086-Z10ZXE-MB

Three way corner connector for creating a corner connection that includes adjustable feet. Screws included.

Finish -----	Matte Black
Mounting Side -----	A

Product Description

FLOAT corner connectors allow you to build and configure this shelving system into anything you can imagine. Use the FLOAT Mounting Template to ensure that screw holes are drilled correctly into your FLOAT bar profiles. Once cut and drilled, you just screw together to create your shelf.

Important Information

3-Way Corners are described as Side-A and Side-B. Use one of each opposite side at the end of each straight bar between two corner joints. When ordering, divide your total count of 3-way corner joints in half to get your A and B order quantity. See technical specifications for assembly examples as you are planning your project.

Product Application

Shelf Dimensions

Wood Shelf:

- Length minus 42mm
- Depth minus 42mm

Glass Shelf:

- Length minus 42mm
- Depth minus 45mm



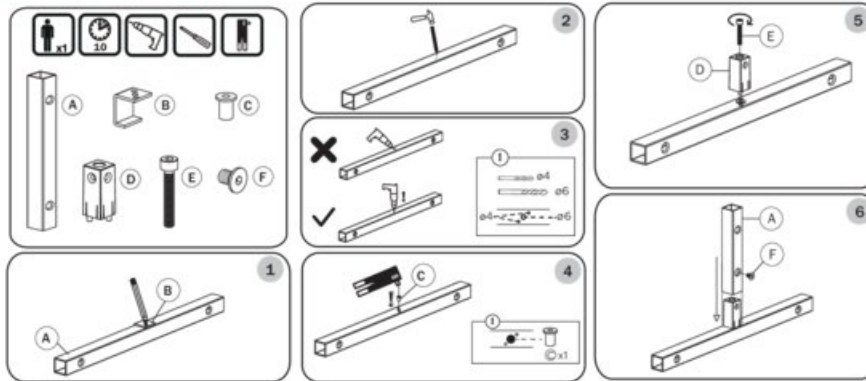
Technical Documents

Eureka FLOAT 1-Way, 2-Way & 3-Way Corner Connectors

Item Description	Part#
1 Way Hidden Connector, Bare Metal	086-Z0ZXE-MB
1 Way Leg with Adjust. Foot, Matte Black	086-E4RAM-MB
2 Way Corner, Matte Black	086-Z6ZXE-MB
2 Way Corner w/ Adjust Feet, Matte Black	086-Z6ZXE-MB
3 Way Corner A Side with Adjust. Foot	086-Z10ZXE-MB
3 Way Corner B Side with Adjust. Foot	086-Z20ZXE-MB

- 1-Way Leg with Adjustable Foot adds 10mm to the length of your bar and provides an additional 10mm of adjustment range.
- 2-Way and 3-Way Connectors with Adjustable Feet, have the same dimensions as standard connectors, with 15mm of adjustable range.
- Screws are included with Corner Connectors. Extras intended for spares.

Installation Instructions for 1-Way Hidden Connector



Leveller Feet Dimensions and Adjustment Range



View this product online at <https://marathonhardware.com/pd/086-Z10ZXE-MB>

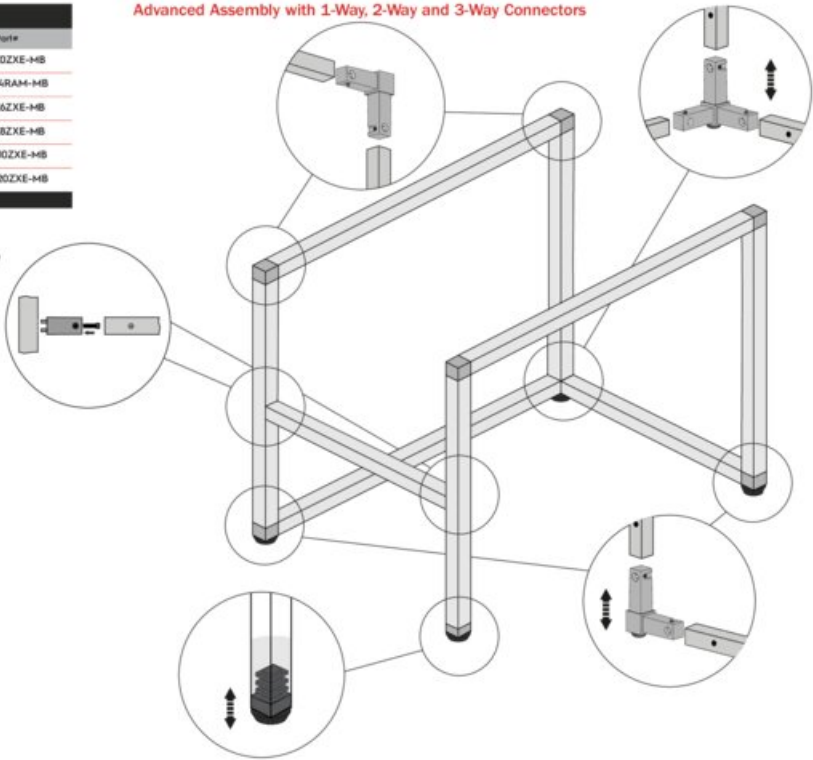


Technical Documents

Eureka FLOAT Corner Connectors	
Item Description	Part #
1 Way Hidden Connector, Bare Metal	086-Z0ZXE-MB
1 Way Leg with Adjust. Foot, Matte Black	086-E4RAM-MB
2 Way Corner, Matte Black	086-Z6ZXE-MB
2 Way Corner w/ Adjust. Feet, Matte Black	086-Z8ZXE-MB
3 Way Corner A Side with Adjust. Foot	086-Z10ZXE-MB
3 Way Corner B Side with Adjust. Foot	086-Z20ZXE-MB

- 3-Way Corners are not directionally specific. Use 1 of each type (A/B) at each ends of bar that connects in between. See assembly examples for further direction.
- Screws are included with Corner Connectors. Extras intended for spares.

Advanced Assembly with 1-Way, 2-Way and 3-Way Connectors



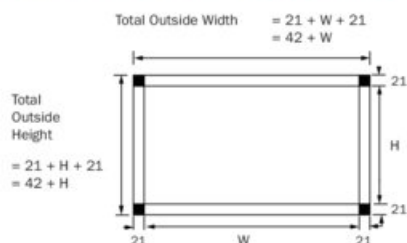
View this product online at <https://marathonhardware.com/pd/086-Z10ZXE-MB>

Technical Documents

Eureka FLOAT 3-Way Corner Connectors	
Item Description	Part#
3 Way Corner A Side, Matte Black	086-Z1ZX-MB
3 Way Corner B Side, Matte Black	086-Z2ZX-MB
3 Way Corner A Side w/ Adjust. Foot	086-Z10ZX-MB
3 Way Corner B Side w/ Adjust. Foot	086-Z20ZX-MB
Extra Screws for Connectors, Matte Black	0FE-AM000-MB

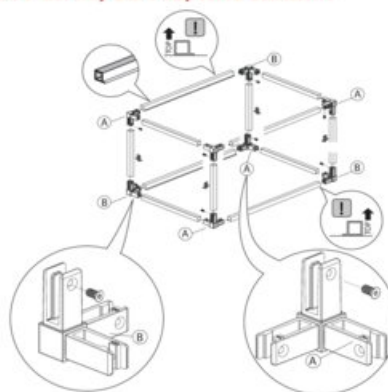
- Corners are not directionally specific. Use 1 of each type (A/B) at each ends of bar that connects in between. See assembly examples for further direction.
- Screws are included with Corner Connectors. Extras intended for spares.

Recommendation for Calculating Outside Dimensions



Technical Specifications

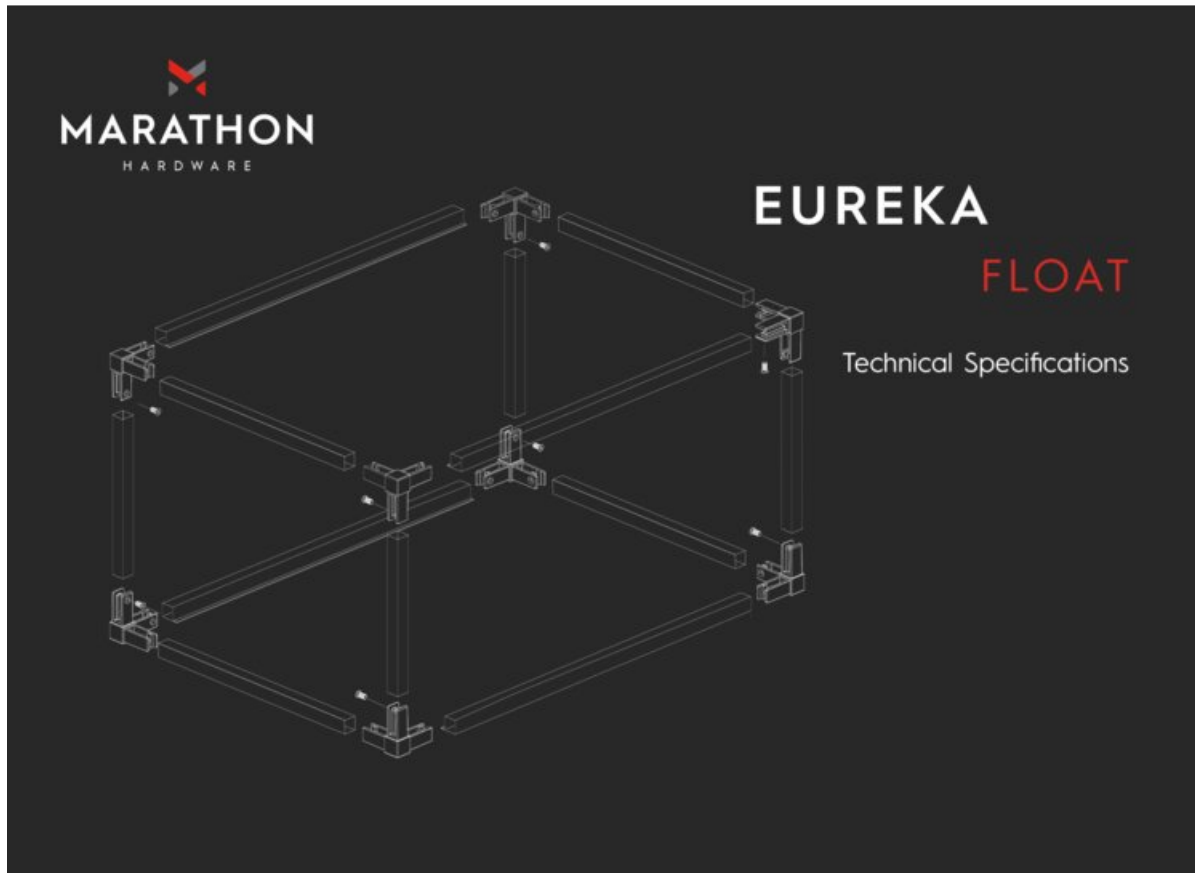
Basic Assembly with 3-Way Corner Connectors



View this product online at <https://marathonhardware.com/pd/086-Z10ZX-MB>



Technical Documents



View this product online at <https://marathonhardware.com/pd/086-Z10ZXE-MB>



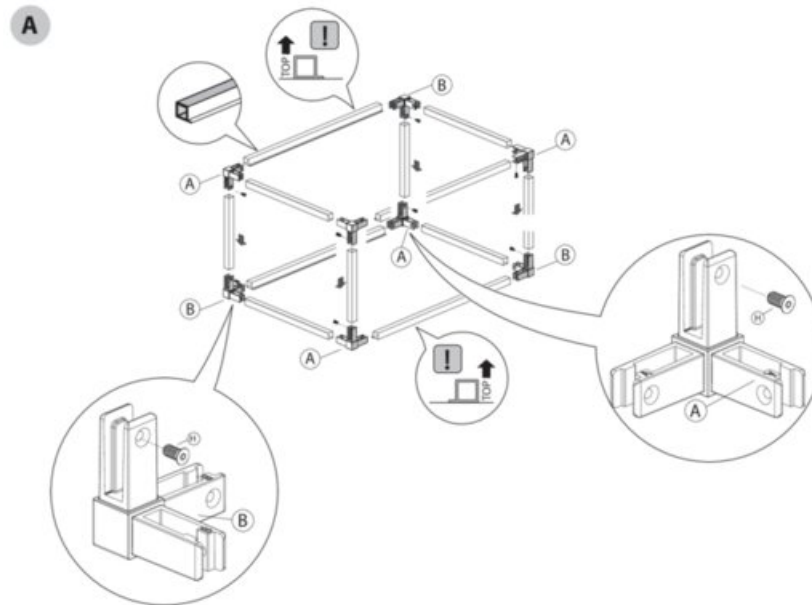
Technical Documents



FLOAT



INSTRUCTIONS



View this product online at <https://marathonhardware.com/pd/086-Z10ZXE-MB>

