



## Slide 16in Soft-Close 100lbs Full Extension Zinc

**Part Number: KS-3M52-16**

King Slide Ball Bearing Slide, Full Extension, Soft-Close, 400mm (16in), Zinc

Premium Quality Ball Bearing Slides with durable and fast-responding damper, enhanced soft-close and ultra smooth gliding motion.

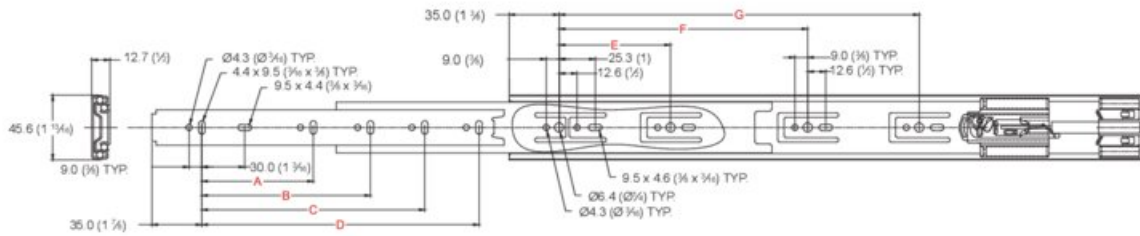
Closing Type	Soft-Close
Finish	Zinc
Length	400mm (16in)
Load Capacity	45kg (100lbs)
Material	Steel
Mounting Type	Side Mount
Slide Extension Type	Full Extension
Slide Type	Ball-Bearing

### Product Description

King Slide has developed a reputation world wide for their high quality slides. The latest version of their side-mount soft-close ball-bearing slide is now available. This medium duty slide is designed for rigidity and ultra smooth motion. An improved soft-close function allows for a minimal opening force, creating less resistance and ultimately a superior experience.

### Product Advantages

- Load Capacity: 45kg (100 lbs)
- Enhanced silent soft-closing feature with light opening force
- Ultra smooth gliding motion with high rigidity and stability
- Certified for 50,000 life cycles (ANSI/KCMA test standard)
- 9 lengths available

**Technical Documents**


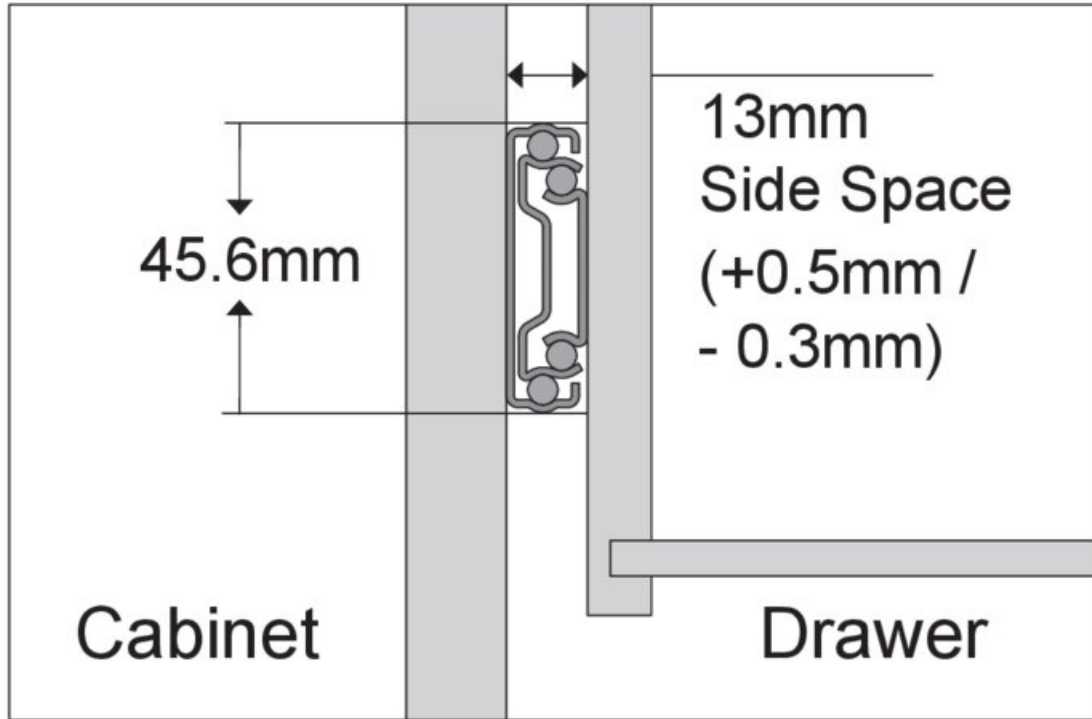
**Note:** Holes other than those shown are stamped for internal manufacturing purposes and may change without notice.

Part#	Slide Length mm (inch)	Slide Travel mm (inch)	Hole Positions mm (inch)						
			A	B	C	D	E	F	G
KS-3M52-12	302 (11 7/8)	285 (11 1/4)	96 (3 3/4)	--	--	--	96 (3 3/4)	--	--
KS-3M52-14	352 (13 7/8)	345 (13 5/8)	128 (5 1/4)	224 (8 1/4)	--	--	128 (5 1/4)	--	--
KS-3M52-16	402 (15 3/4)	400 (15 3/4)	128 (5 1/4)	256 (10 1/4)	--	--	128 (5 1/4)	192 (7 1/2)	--
KS-3M52-18	452 (17 3/4)	450 (17 3/4)	128 (5 1/4)	320 (12 3/4)	--	--	128 (5 1/4)	256 (10 1/4)	--
KS-3M52-20	502 (19 3/4)	500 (19 3/4)	128 (5 1/4)	224 (8 1/4)	352 (13 3/4)	--	128 (5 1/4)	256 (10 1/4)	--
KS-3M52-22	552 (21 3/4)	550 (21 3/4)	128 (5 1/4)	256 (10 1/4)	384 (15 1/4)	--	128 (5 1/4)	224 (8 1/4)	320 (12 3/4)
KS-3M52-24	602 (23 3/4)	600 (23 3/4)	128 (5 1/4)	288 (11 1/4)	416 (16 3/4)	--	128 (5 1/4)	224 (8 1/4)	352 (13 3/4)
KS-3M52-26	652 (26)	650 (25 1/2)	128 (5 1/4)	288 (11 1/4)	416 (16 3/4)	480 (18 3/4)	128 (5 1/4)	256 (10 1/4)	416 (16 3/4)
KS-3M52-28	702 (27 3/4)	700 (27 1/2)	128 (5 1/4)	320 (12 3/4)	448 (17 3/4)	544 (21 3/4)	128 (5 1/4)	320 (12 3/4)	480 (18 3/4)

View this product online at <https://marathonhardware.com/pd/KS-3M52-16>



## Technical Documents



View this product online at <https://marathonhardware.com/pd/KS-3M52-16>

Technical Documents

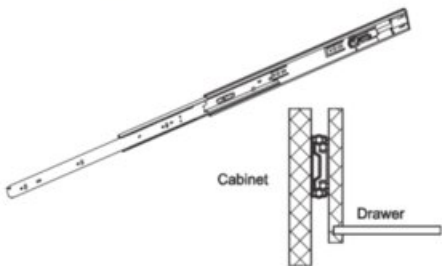
King Slide®

3M52

Medium Duty Slides-Silent Soft Closing  
Installation Instruction

---

**Specifications**



Cabinet  
Drawer

- Length: 302mm to 702mm (12" to 28")
- Travel: Refer to Slide Travel column below
- Side Space: 13.0mm (+0.5mm /-0.3mm)
- Height: 45.6mm (1.80")
- Max Loading: 45 kg (100 lb)/pair
- Mount: Side Mount
- Disconnect: Yes
- Finish: Clear Zinc or Black
- Material: Cold Rolled Steel

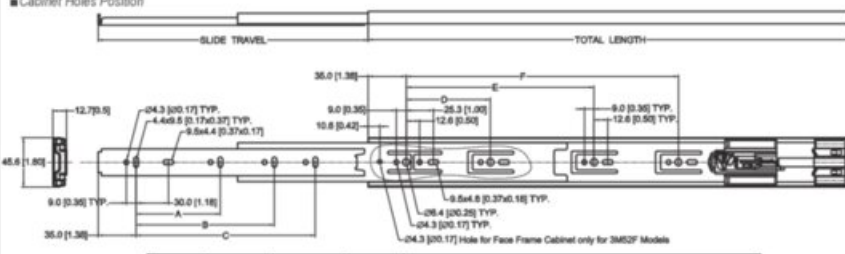
**APPLICATIONS**

Medical Equipment / Industrial Work Stations  
/ Office and Kitchen Furniture / Home Cabinets  
/ Box Drawers

---

**Cabinet Screw Positions**

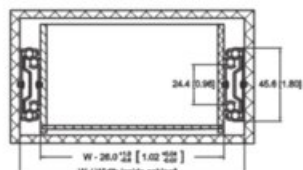
■ Cabinet Holes Position



PART NO.	TOTAL LENGTH [mm] (in.)	SLIDE TRAVEL [mm] (in.)	LOAD RATING kg (lb) / psi	HOLES POSITION					
				A	B	C	D	E	F
3M52-300	302.0 [11.89]	285.0 [11.22]	18 [40]	96.0 [3.78]	---	---	96.0 [3.78]	---	---
3M52-350	352.0 [13.86]	345.0 [13.58]	25 [55]	128.0 [5.04]	224.0 [8.82]	---	128.0 [5.04]	---	---
3M52-400	402.0 [15.83]	400.0 [15.75]	29 [65]	128.0 [5.04]	256.0 [10.08]	---	128.0 [5.04]	192.0 [7.56]	---
3M52-450	452.0 [17.81]	450.0 [17.72]	34 [75]	128.0 [5.04]	320.0 [12.60]	---	128.0 [5.04]	256.0 [10.08]	---
3M52-500	502.0 [19.78]	500.0 [19.68]	34 [75]	128.0 [5.04]	224.0 [8.82]	352.0 [13.86]	128.0 [5.04]	256.0 [10.08]	---
3M52-550	552.0 [21.73]	550.0 [21.66]	32 [70]	128.0 [5.04]	256.0 [10.08]	384.0 [15.12]	128.0 [5.04]	224.0 [8.82]	320.0 [12.60]
3M52-600	602.0 [23.70]	600.0 [23.62]	32 [70]	128.0 [5.04]	288.0 [11.34]	416.0 [16.38]	128.0 [5.04]	224.0 [8.82]	352.0 [13.86]

---

**Installation Dimension**

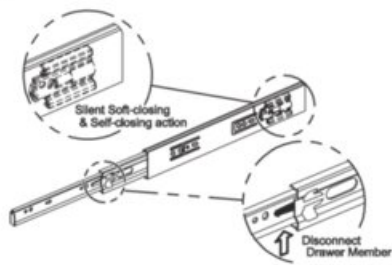


24.4 [0.96]  
45.6 [1.80]

W - 26.0 [1.02] ±0.15  
W (Width inside cabinet)

**Attention :**  
The width inside cabinet minus 26 ±0.15 mm is then the suitable drawer width.  
E.g. the width of inside cabinet is 600mm and the suitable range of drawer width is 574 ±0.15mm.

**Feature**



Silent Soft-closing & Self-closing action

Disconnect Drawer Member

Note : King Slide reserves the right to alter specifications of all the products without notice. The actual product may vary from the Illustration if the entity is different from the Illustration, please refer to the entity.

View this product online at <https://marathonhardware.com/pd/KS-3M52-16>

**Technical Documents**4700 Broadmoor SE, Suite 200  
Kentwood, MI 49512Telephone: 616-656-7401  
Facsimile: 616-656-2022  
www.intertek-ettsemko.comKING SLIDE WORKS CO., LTD  
Date: October 28, 2008Report No.: 3163757GRR-001  
Reference No.: 08-1001-177435  
Page 1 of 6**Test Report For:****KING SLIDE WORKS CO., LTD.****ANSI/KCMA-A161.1-2000  
Performance and Construction Standard  
for Kitchen and Vanity Cabinets****#3M52 Side Mount soft  
closing slide****James Jantz  
Project Manager****Bryan Stratton  
Reviewer/si**

*This report is for the exclusive use of Intertek's Client and is provided pursuant to the agreement between Intertek and its Client. Intertek's responsibility and liability are limited to the terms and conditions of the agreement. Intertek assumes no liability to any party, other than to the Client in accordance with the agreement, for any loss, expense or damage occasioned by the use of this report. Only the Client is authorized to permit copying or distribution of this report and then only in its entirety. Any use of the Intertek name or one of its marks for the sale or advertisement of the tested material, product or service must first be approved in writing by Intertek. The observations and test results in this report are relevant only to the sample tested. This report by itself does not imply that the material, product, or service is or has ever been under an Intertek certification program.*

View this product online at <https://marathonhardware.com/pd/KS-3M52-16>



## Technical Documents



### King Slide Ball Bearing Slides

King Slide has developed a reputation world wide for their high quality slides. The latest version of their side-mount soft-close ball-bearing slide is now available. This medium duty slide is designed for rigidity and ultra smooth motion. An improved soft-close function allows for a minimal opening force, creating less resistance and ultimately a superior experience.

Ensure your furniture drawers function to your own high standards with the new ball-bearing slide from King Slide!

### Product Features

- Load Capacity: 45kg (100 lbs)
- Enhanced silent soft-closing feature with light opening force
- Ultra smooth gliding motion with high rigidity and stability
- Certified for 50,000 life cycles (ANSI/KCMA test standard)

800 840 1228 · MARATHONHARDWARE.COM

View this product online at <https://marathonhardware.com/pd/KS-3M52-16>

## Technical Documents

www.kingslide.com **King Slide®**

### 3M52 Medium Duty Slides - Silent Soft Closing



Silent Soft-Closing Ball Bearing Slides

#### Specifications

- **Length:** 302mm to 700mm (12" to 28")
- **Travel:** Refer to Slide Travel column below
- **Side Space:** 13.0mm (+0.5mm /-0.3mm)
- **Height:** 45.6mm (1.80")
- **Max.Loading:** 45 kg (100 lb)/pair \*
- **Mount:** Side Mount
- **Disconnect:** Yes
- **Finish:** Clear Zinc or Black
- **Material:** Cold Rolled Steel
- **Package:** Unit Packed in 15 pairs/carton  
Bulk Packed in 40 pcs/carton for external slides  
100 pcs/carton for inner slides

\* Slide Max load rating based on 18" slides

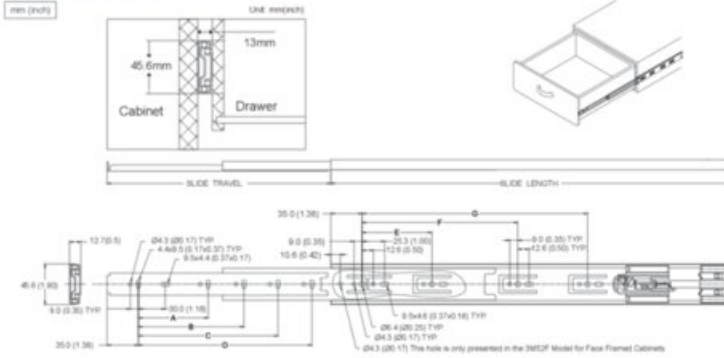
#### Features

- Durable damping system with fast response capability
- Enhanced silent soft-closing feature with light opening force
- Ultra smooth gliding motion with high rigidity and stability
- Guaranteed 50,000 life cycles under proper installation and normal usage

#### Applications

- Medical Equipment
- Industrial Work Stations
- Office and Kitchen Furniture
- Home Cabinets
- Box Drawers

#### Dimensional Specifications



Note: Holes other than those shown are stamped for internal manufacturing purposes and may change without notice

Item No.	Slide Length mm (inch)	Slide Travel mm (inch)	Hole Positions - mm (inch)						
			A	B	C	D	E	F	G
3M52-300	302 (11.89)	285 (11.22)	96 (3.78)	—	—	—	96 (3.78)	—	—
3M52-350	352 (13.86)	345 (13.58)	128 (5.04)	224 (8.82)	—	—	128 (5.04)	—	—
3M52-400	402 (15.83)	400 (15.73)	128 (5.04)	256 (10.08)	—	—	128 (5.04)	182 (67.56)	—
3M52-450	452 (17.80)	450 (17.72)	128 (5.04)	320 (12.60)	—	—	128 (5.04)	256 (10.08)	—
3M52-500	502 (19.78)	500 (19.69)	128 (5.04)	224 (8.82)	352 (13.86)	—	128 (5.04)	256 (10.08)	—
3M52-550	552 (21.73)	550 (21.65)	128 (5.04)	256 (10.08)	384 (15.12)	—	128 (5.04)	224 (8.82)	320 (12.60)
3M52-600	602 (23.70)	600 (23.62)	128 (5.04)	288 (11.34)	416 (16.38)	—	128 (5.04)	224 (8.82)	352 (13.86)
3M52-650	652 (25.67)	650 (25.51)	128 (5.04)	288 (11.34)	416 (16.38)	480 (18.90)	128 (5.04)	256 (10.08)	416 (16.38)
3M52-700	702 (27.64)	700 (27.48)	128 (5.04)	320 (12.60)	448 (17.64)	544 (21.42)	128 (5.04)	320 (12.60)	480 (18.90)

King Slide reserves the right to alter specifications of all the products without notice. If the entity is different from the illustration, please refer to the entity

View this product online at <https://marathonhardware.com/pd/KS-3M52-16>

