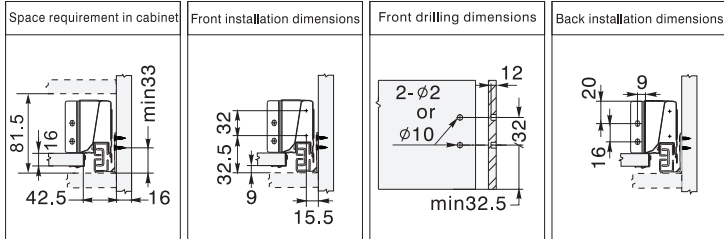
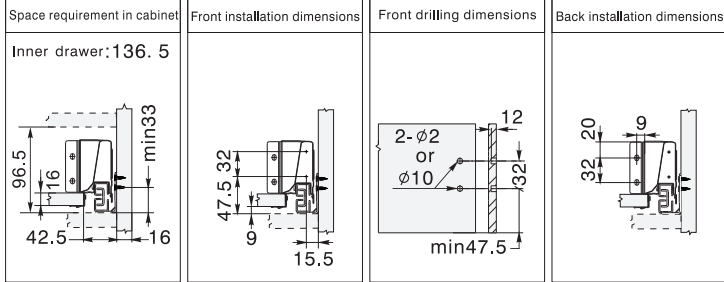


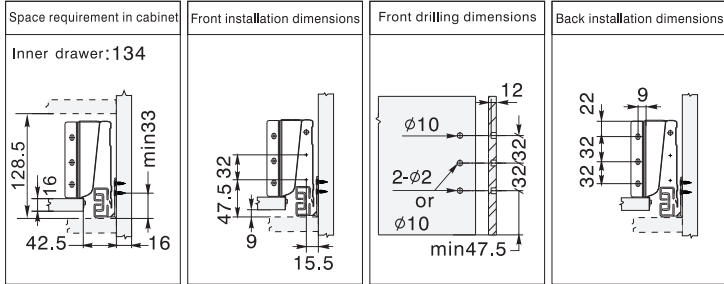
Lower drawer,height N



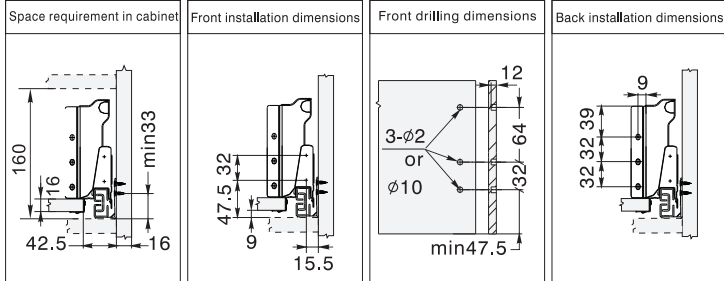
Lower drawer,height M



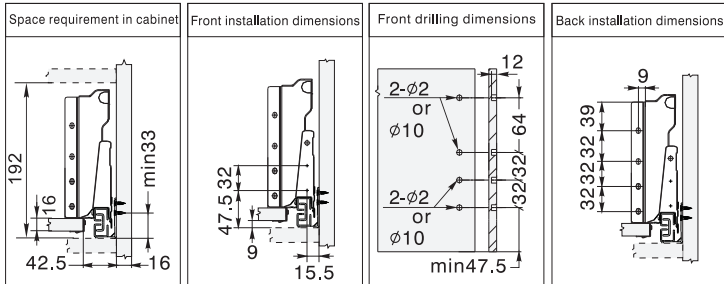
Lower drawer,height K



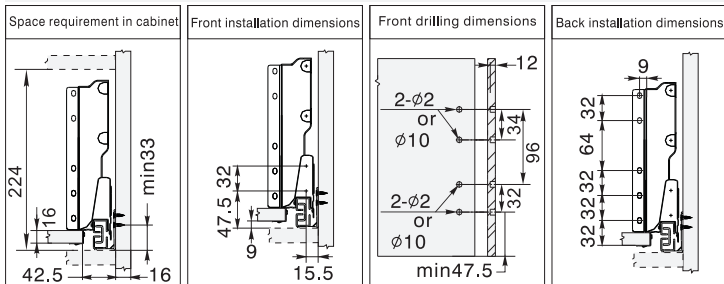
Medium drawer,height B



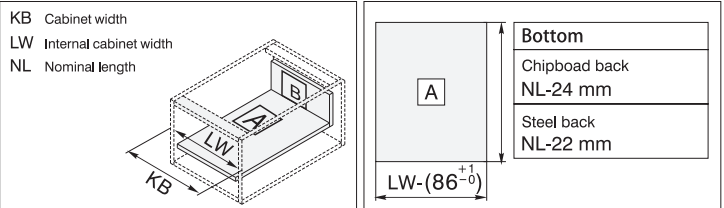
Medium drawer,height C



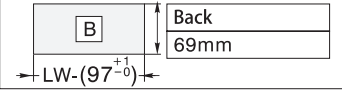
High drawer,height D



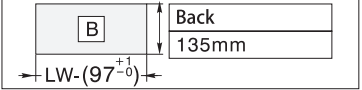
Cutting dimensions for 16mm chipboard



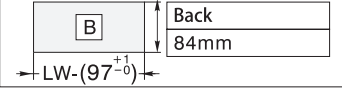
Lower drawer,height N



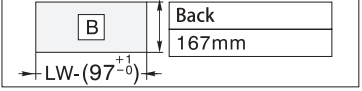
Medium drawer,height B



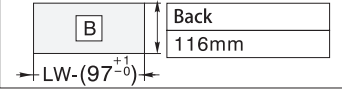
Lower drawer,height M



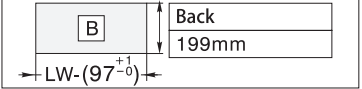
Medium drawer,height C



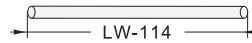
Lower drawer,height K



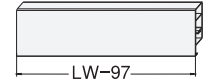
High drawer,height D



Rod for Push-open Synchronization

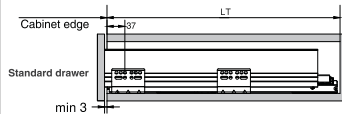


Front section for inner drawer

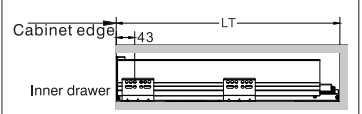


Installation dimensions

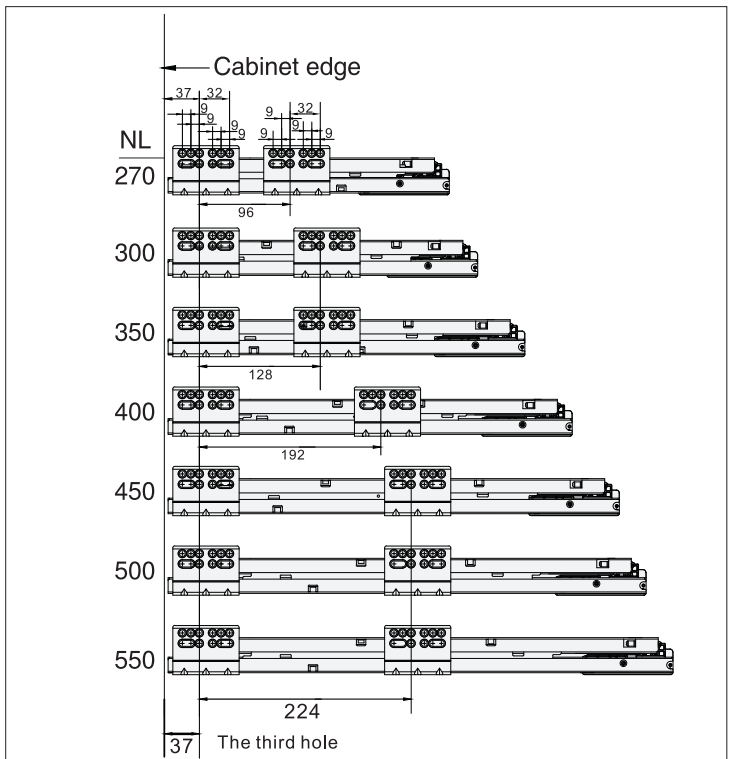
Internal cabinet Depth = LT LT = NL + 35



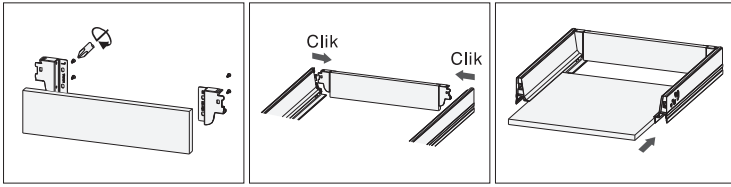
Internal cabinet Depth = LT LT = NL + 41



Screw Positions of the Slides

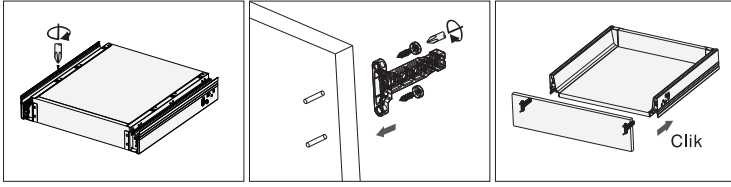


Installation Instruction



Back assembly

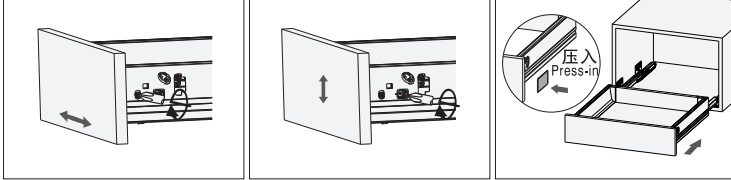
Bottom assembly



Fix screws

Front assembly

Adjustment

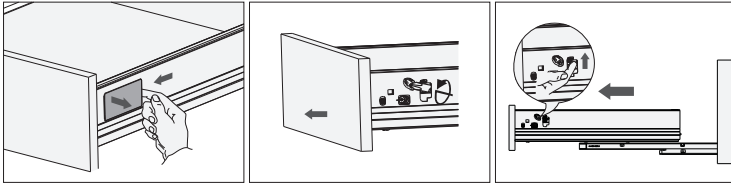


Left&right adjustment

Up&down adjustment

Slide into the cabinet

Removal

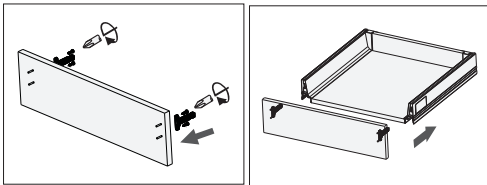


Tip up the cover and pull out

Turn screw driver to release the drawer front

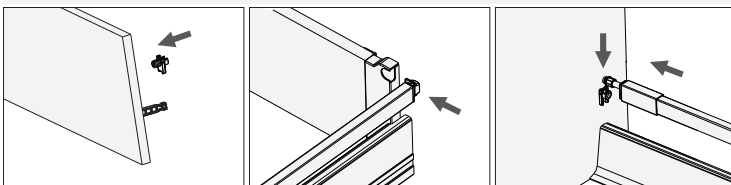
Lift the release handle and Pull out the drawer

Lower Drawer,height N/M/K



Front assembly

Medium Drawer,height B/C

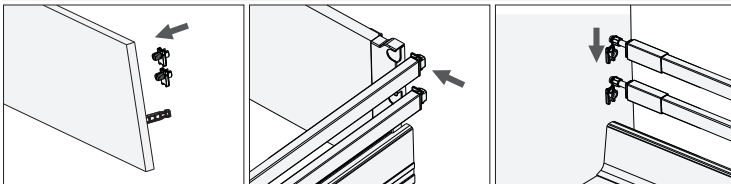


Front assembly

Back assembly

Fit the front

High Drawer,height D

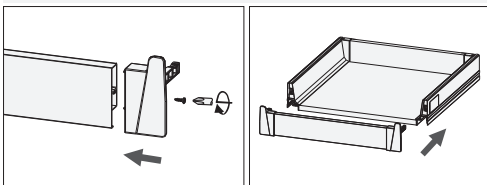


Front assembly

Back assembly

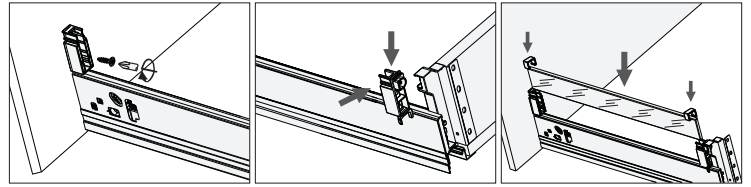
Fit the front

Inner drawer,height M/K/B/C/D



Front assembly

Glass-boxside for medium drawer,height B

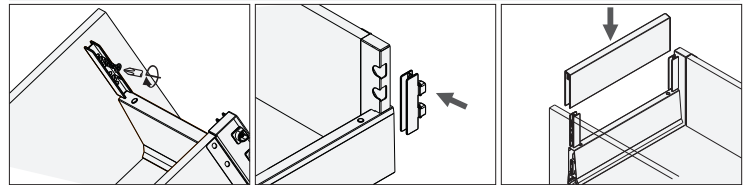


Fit the front

Back assembly

Side assembly

Metal-boxside for high drawer,height D

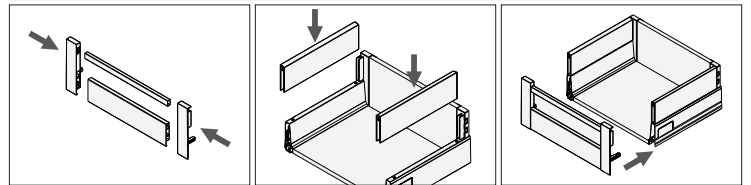


Fit the front

Back assembly

Side assembly

Metal-boxside for inner high drawer,height D

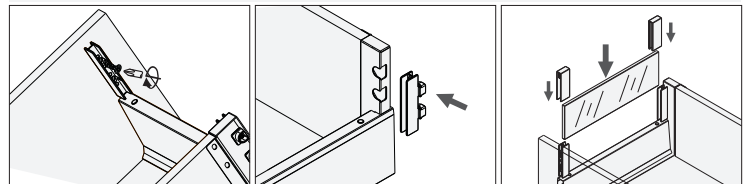


Fit the front

Side assembly

Fit the front

Glass-boxside for high drawer,height D

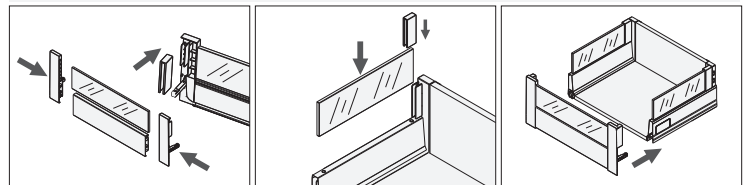


Fit the front

Back assembly

Side assembly

Glass-boxside for inner high drawer,height D

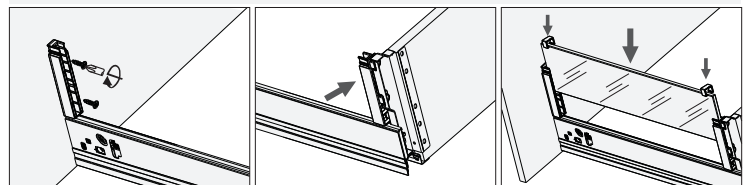


Fit the front

Side assembly

Fit the front

Glass-boxside for high drawer,height D

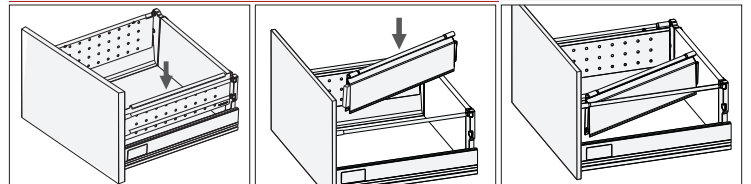


Fit the front

Back assembly

Side assembly

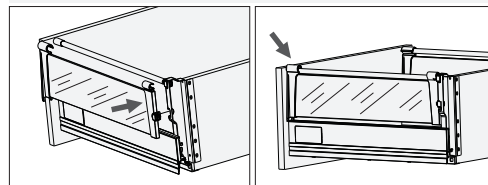
Metal-boxside for high drawer,height D



Side assembly

Side assembly

Glass-boxside for high drawer,height D



Side assembly