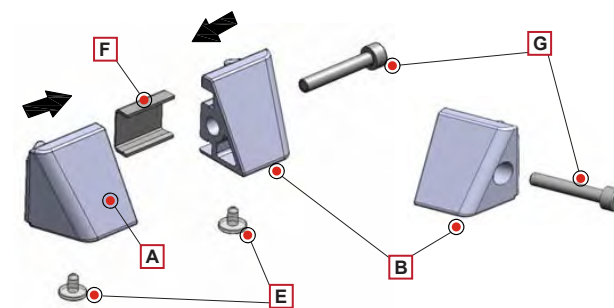


Top Mount Bracket for Glass or Cabinets Installation

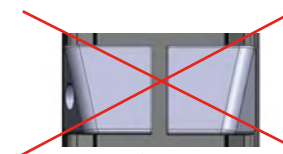


Important Information*

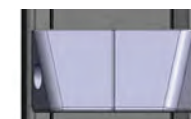
Left and Right version included with purchase, left and right installation are similar.

- A** Front left bracket clamp
- B** Back left bracket clamp
- E** Plastic transparent bumpers
- F** Anti-scratch plastic plates
- G** Hexagon socket head cap screw M4 x 25mm

1. Insert anti-scratch plate **F** on its seat.
2. Fasten the clamps **A** with **B** with screws **G** on the vertical style after setting them just over the shelf
3. Make sure the two clamps **A** and **B** are completely closed against each other without opening.
4. Insert the transparent plastic bumper **E** into the proper holes of clamps **A** and **B**



NO



YES



Eureka SLIM Top Mount Bracket for Glass or Cabinets	
Item Description	Part#
Anodized Aluminum	035-3522-AN
Matte Black	035-3522-MB